

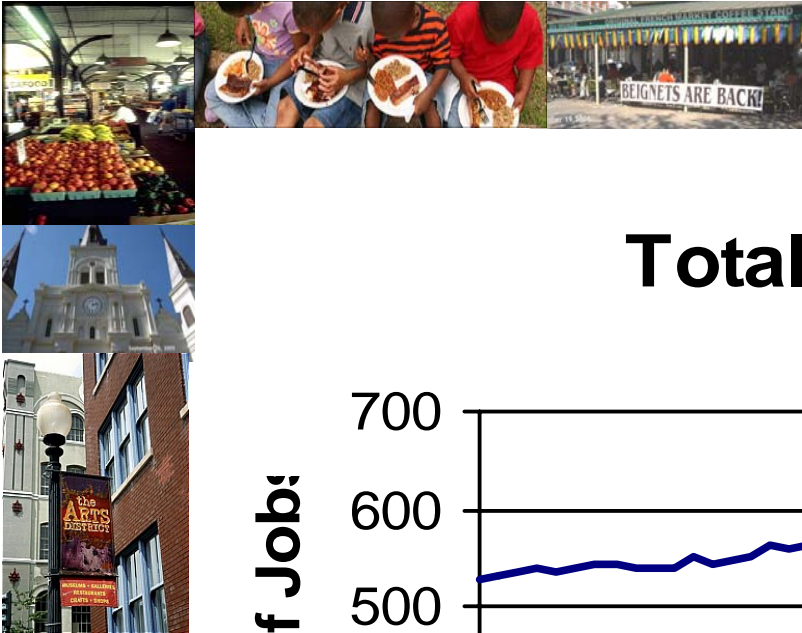


# Impact of Hurricane Katrina on New Orleans

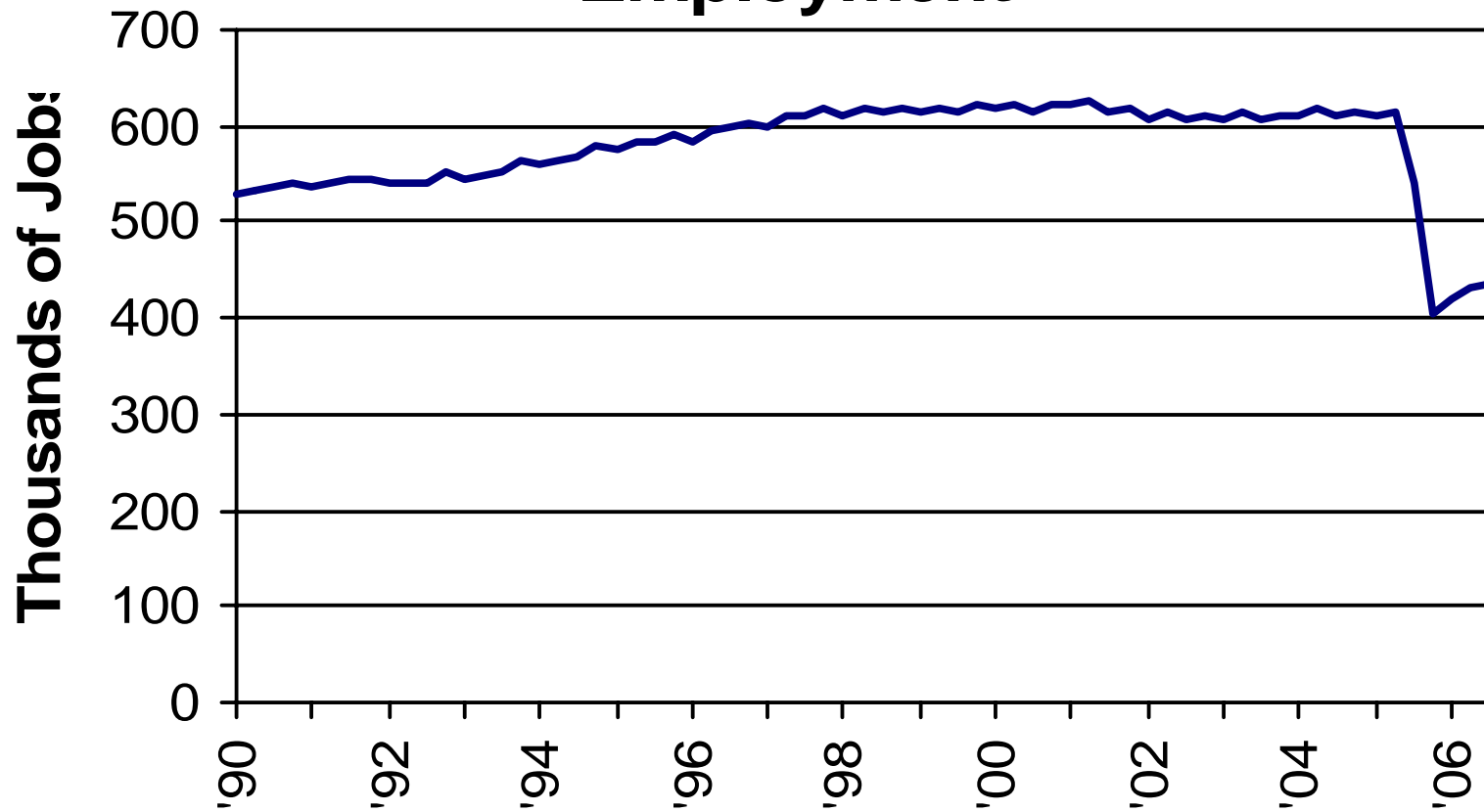
Presentation to the:  
**Economic Forecasting Conference**  
**Georgia State University**

By:  
Janet F. Speyrer, Ph.D.  
Associate Dean for Research  
College of Business Administration  
University of New Orleans  
November 15, 2006

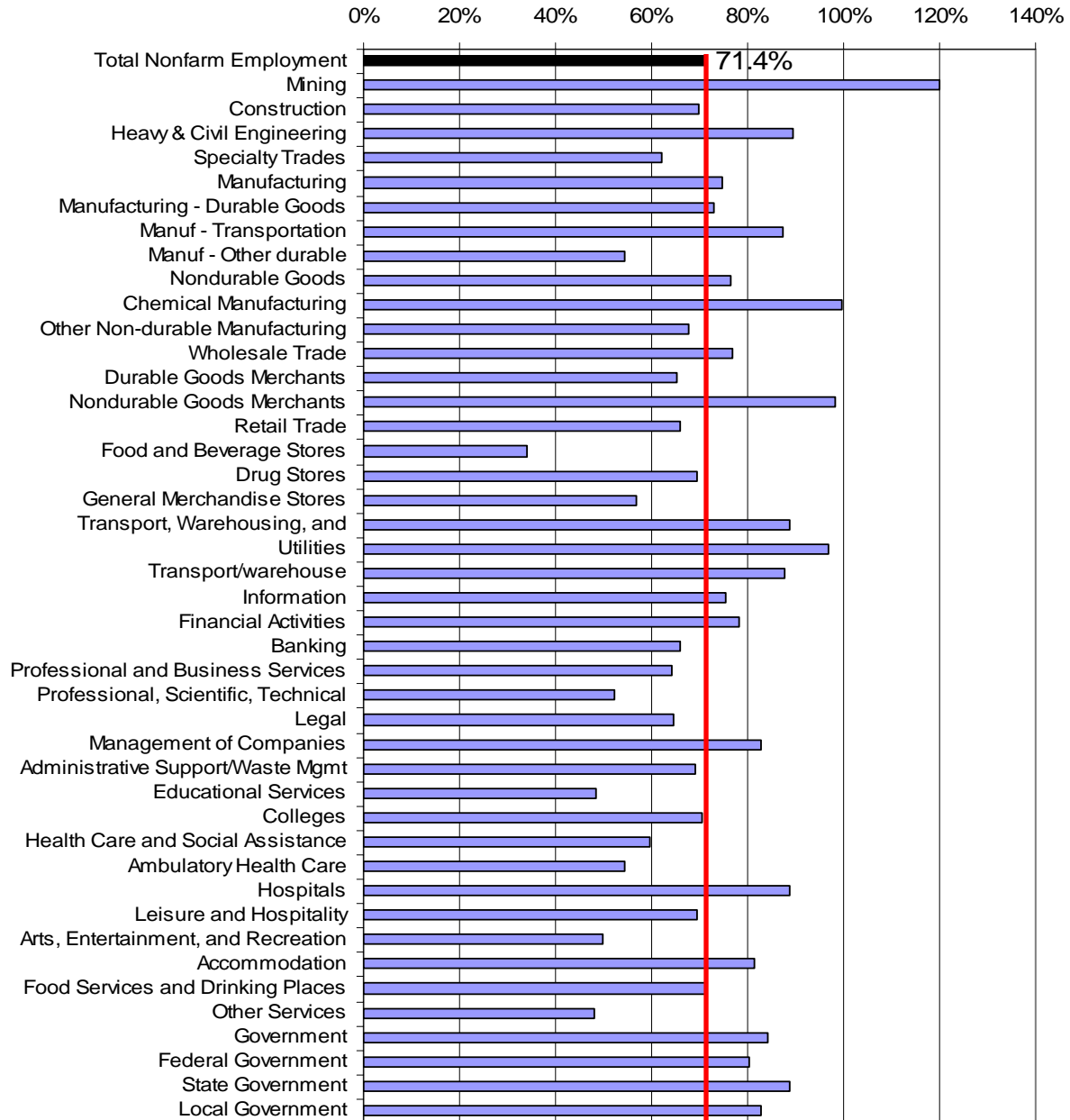




## Total Metro New Orleans Employment

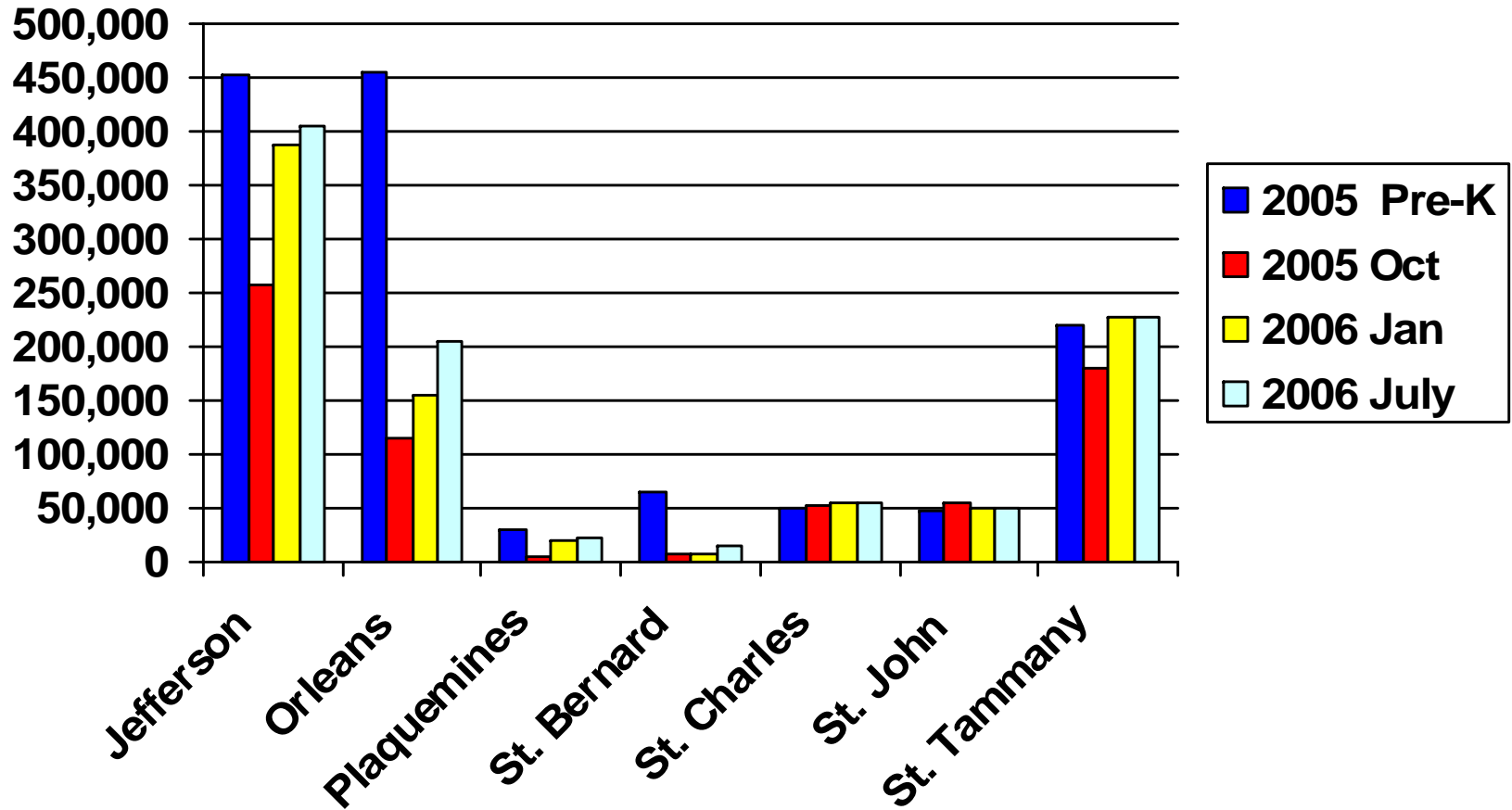


## New Orleans Employment Current % Pre-Katrina



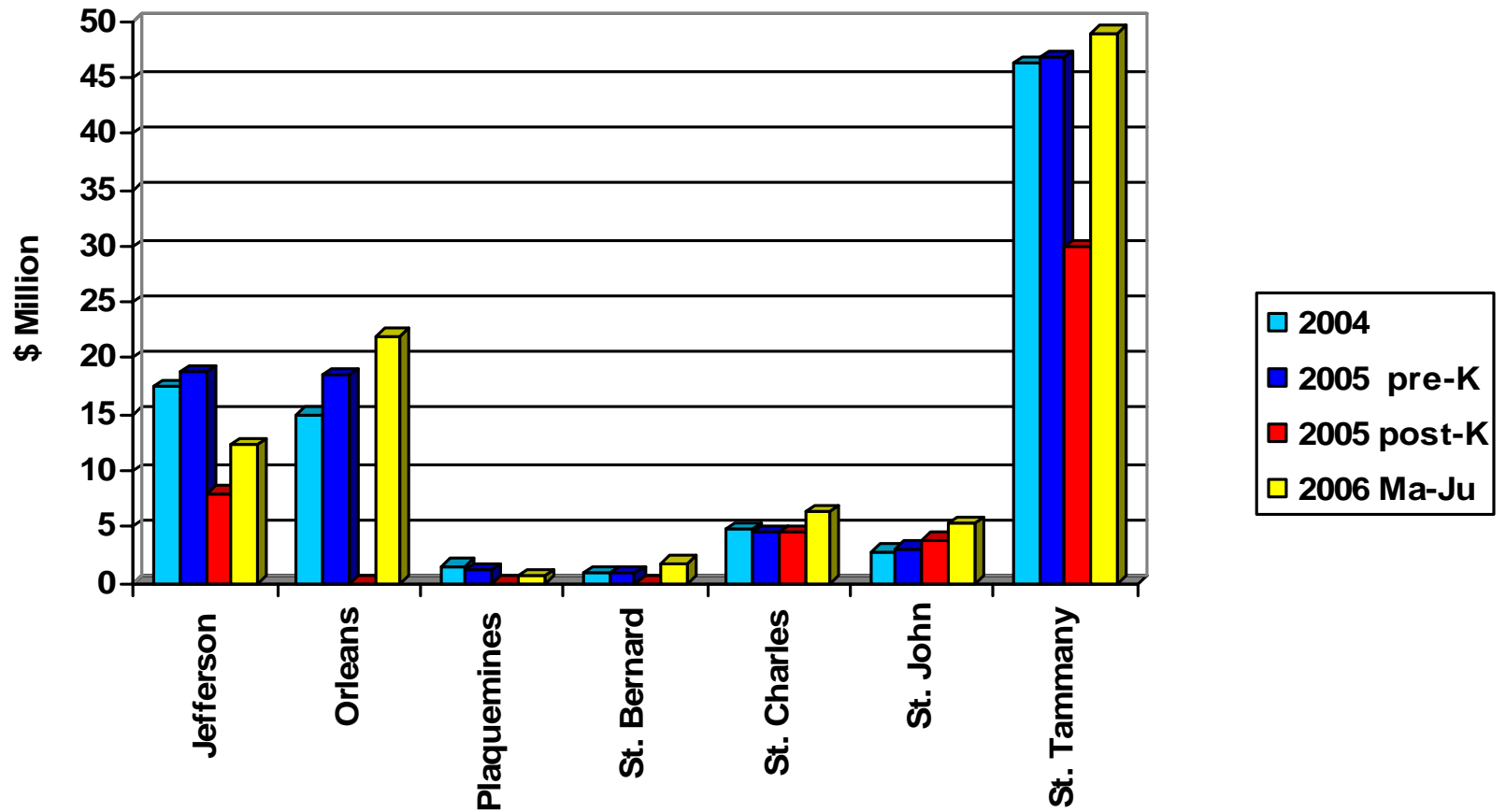


## New Orleans Area Population by Parish



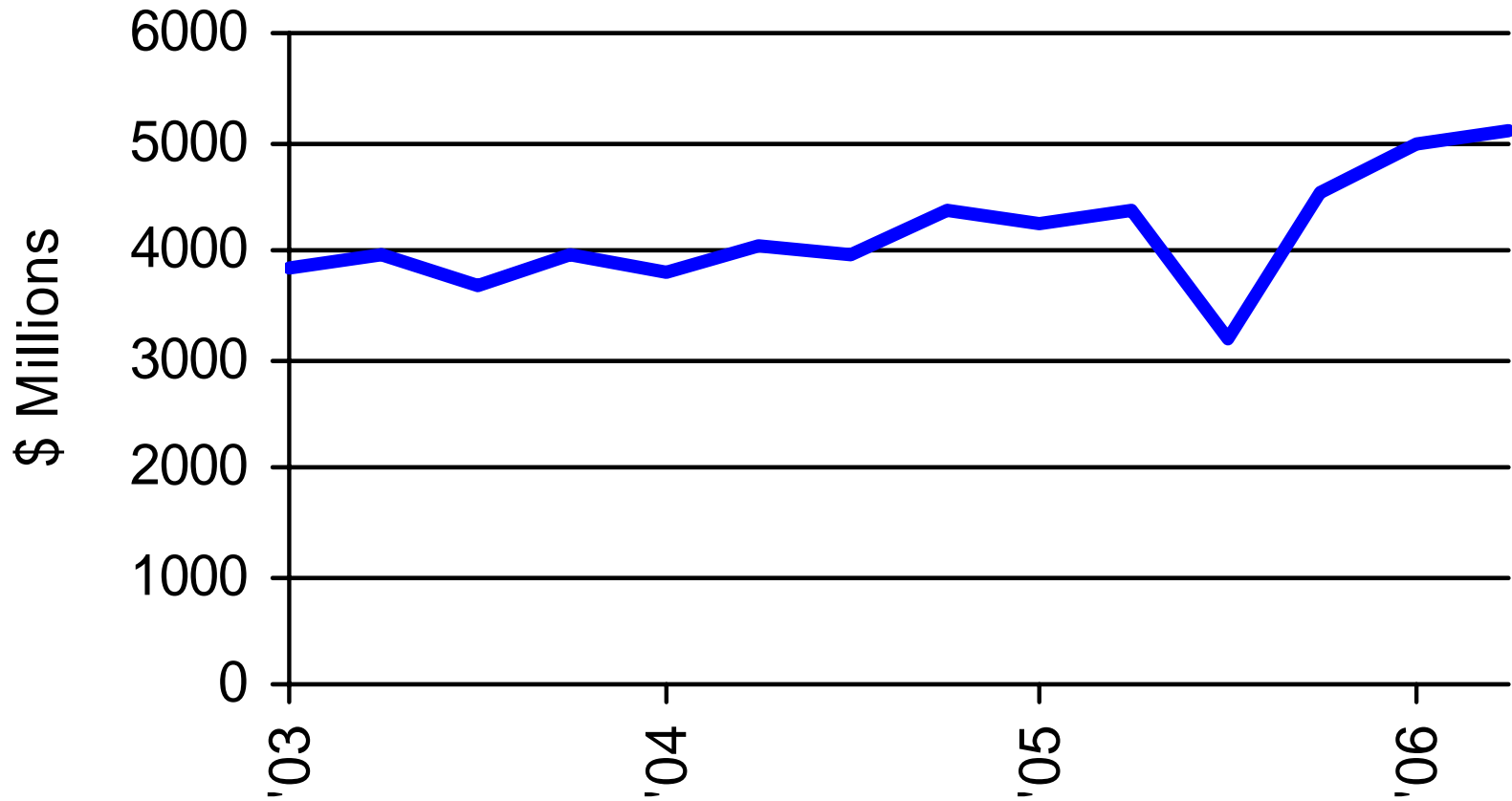


## Residential Construction - Monthly Average



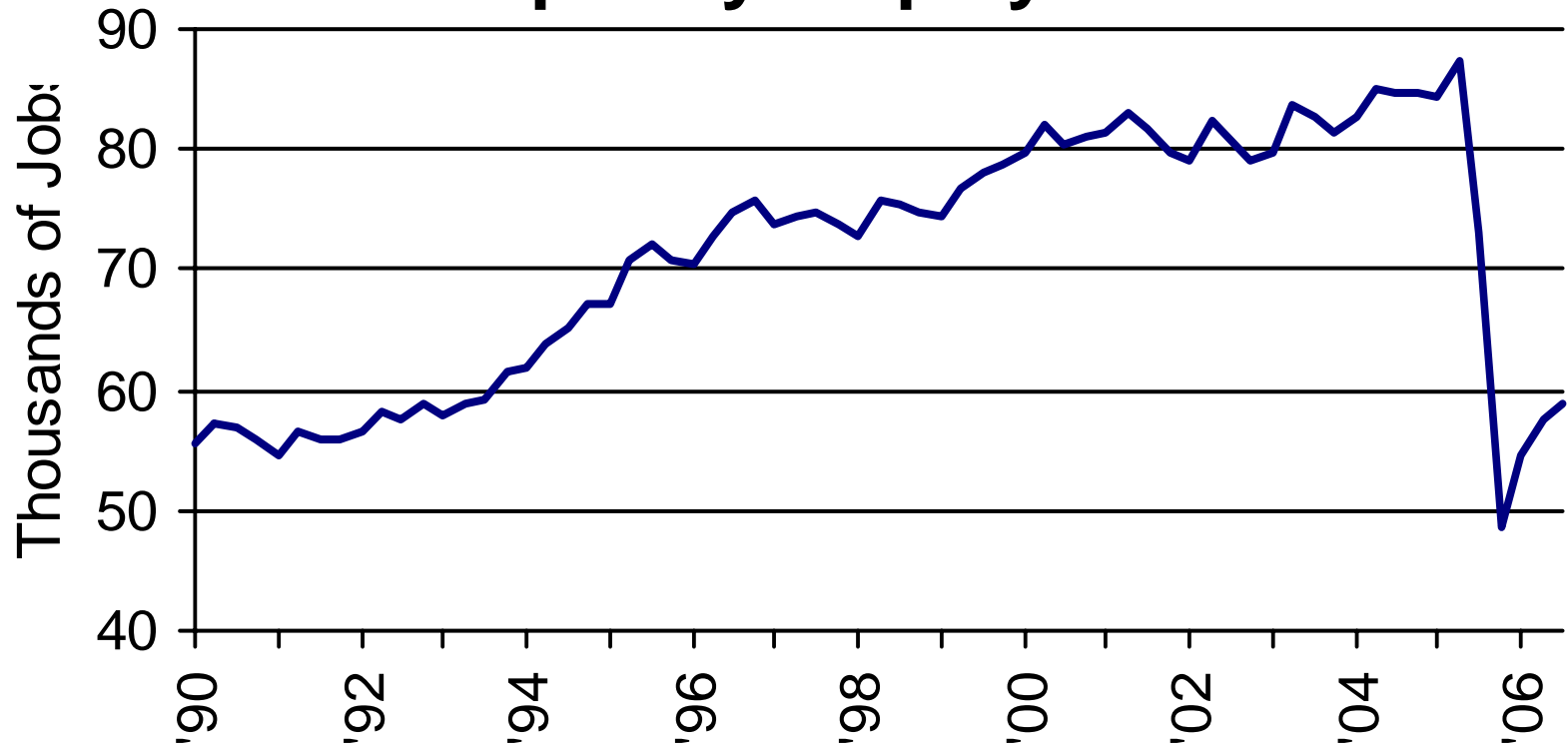


## Metro New Orleans Taxable Sales Per Quarter



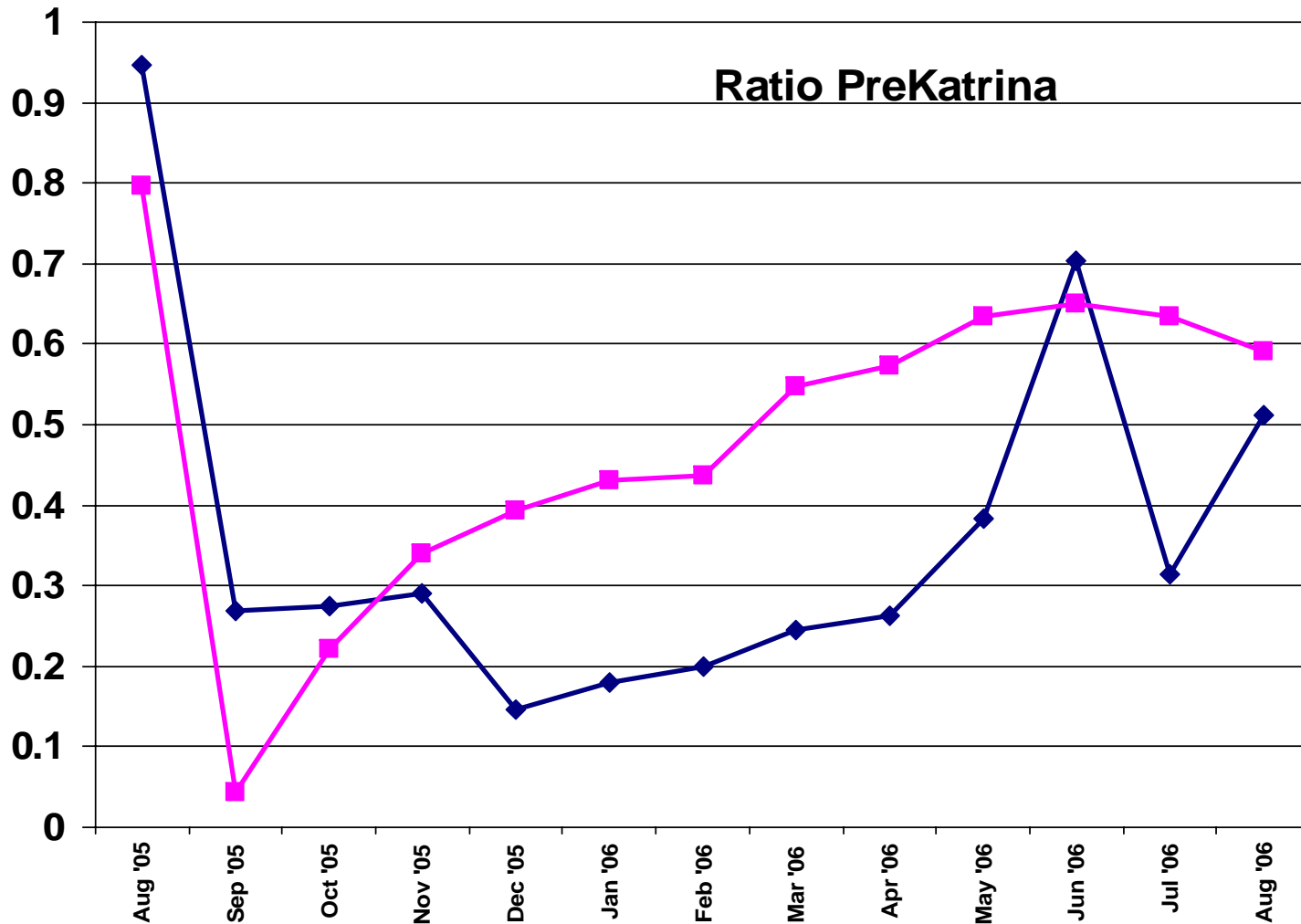


## New Orleans Area Leisure & Hospitality Employment





# Convention Bookings & Airport Deplanements

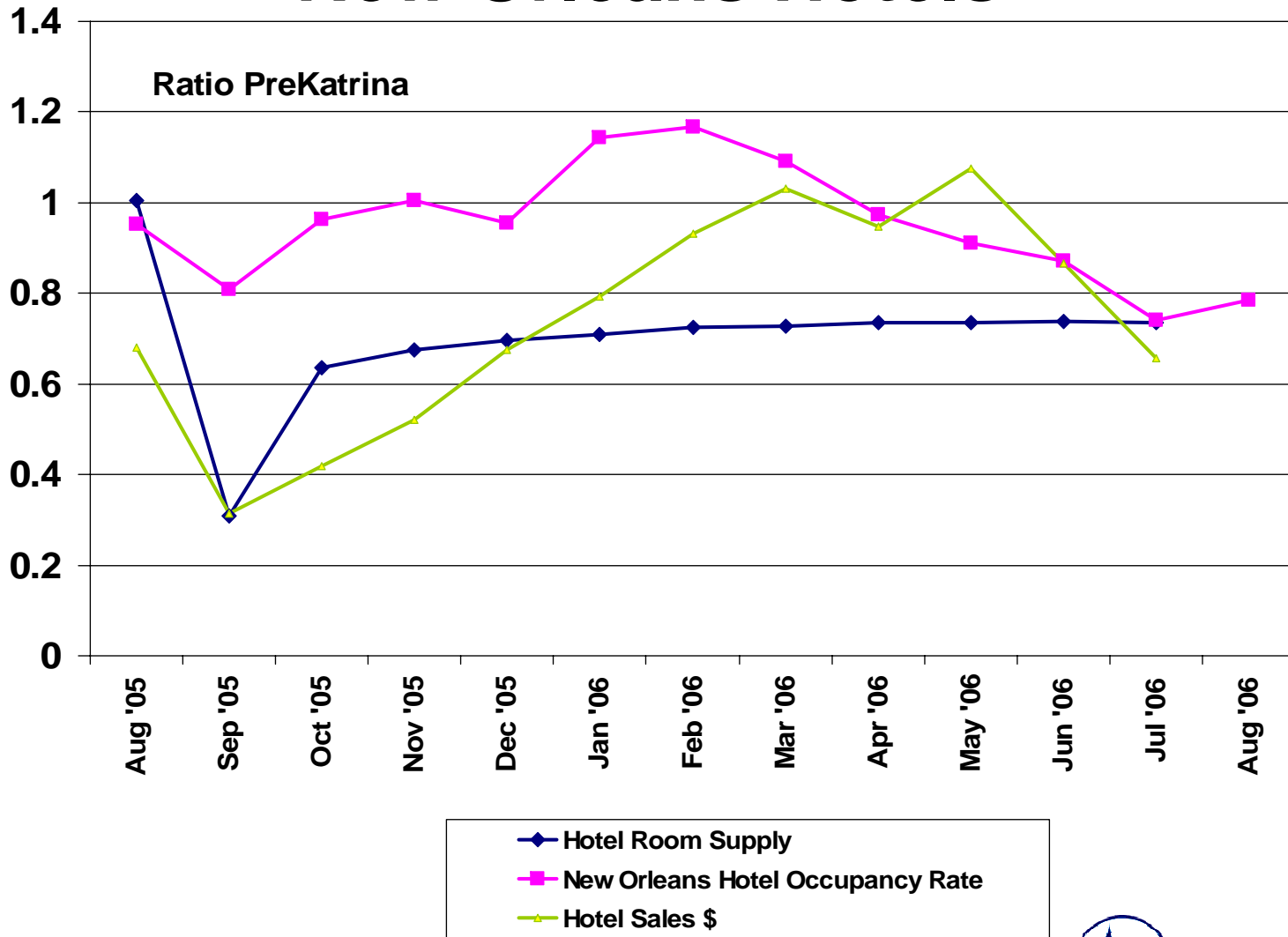


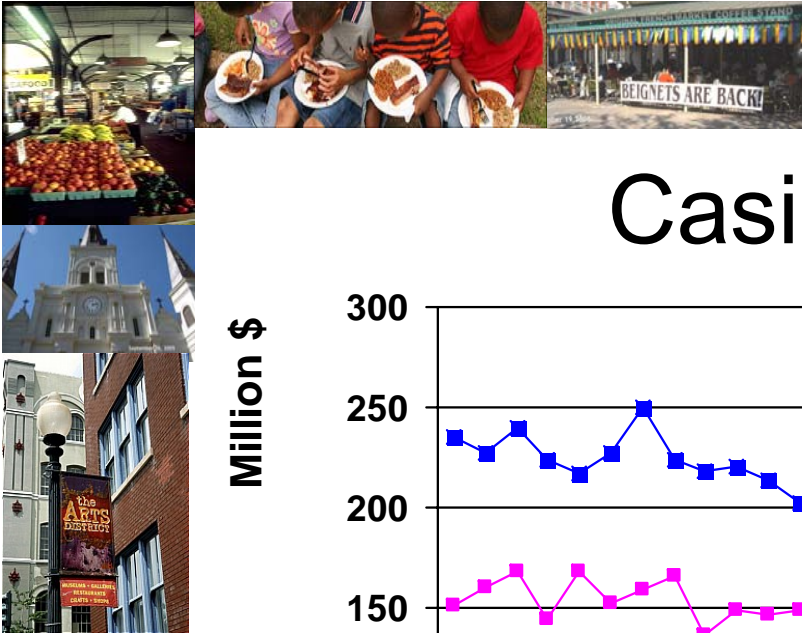
◆ Convention Room Nights    ■ Deplanements



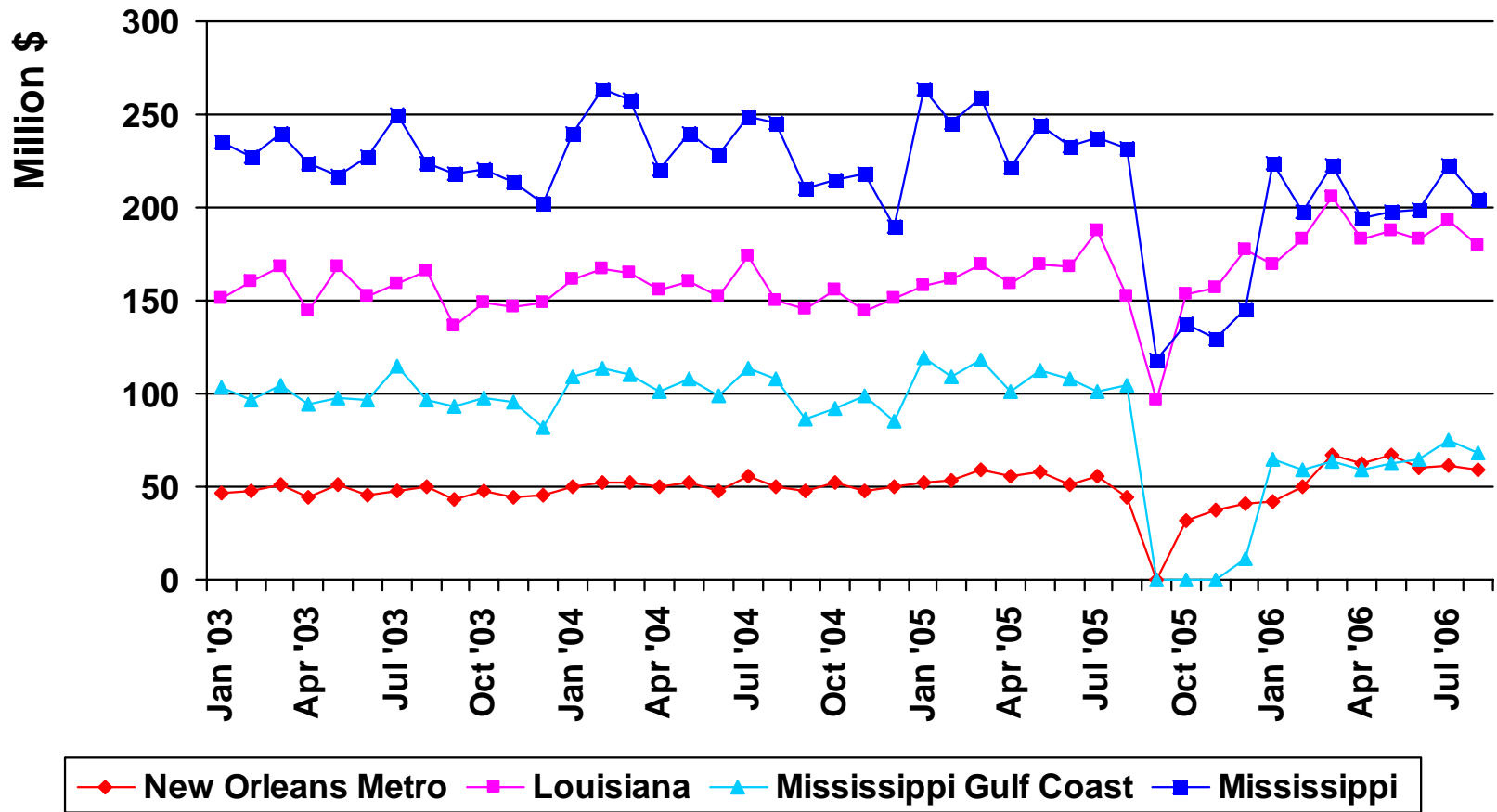


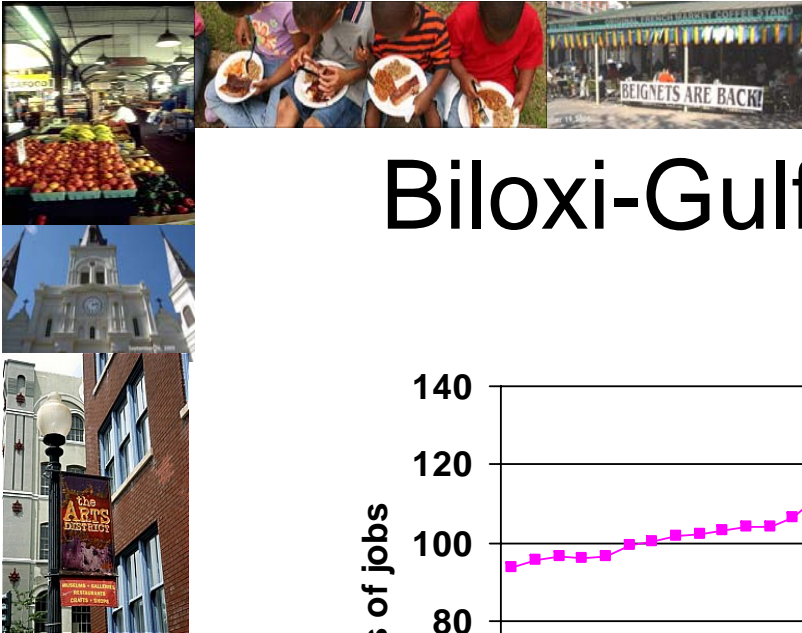
# New Orleans Hotels



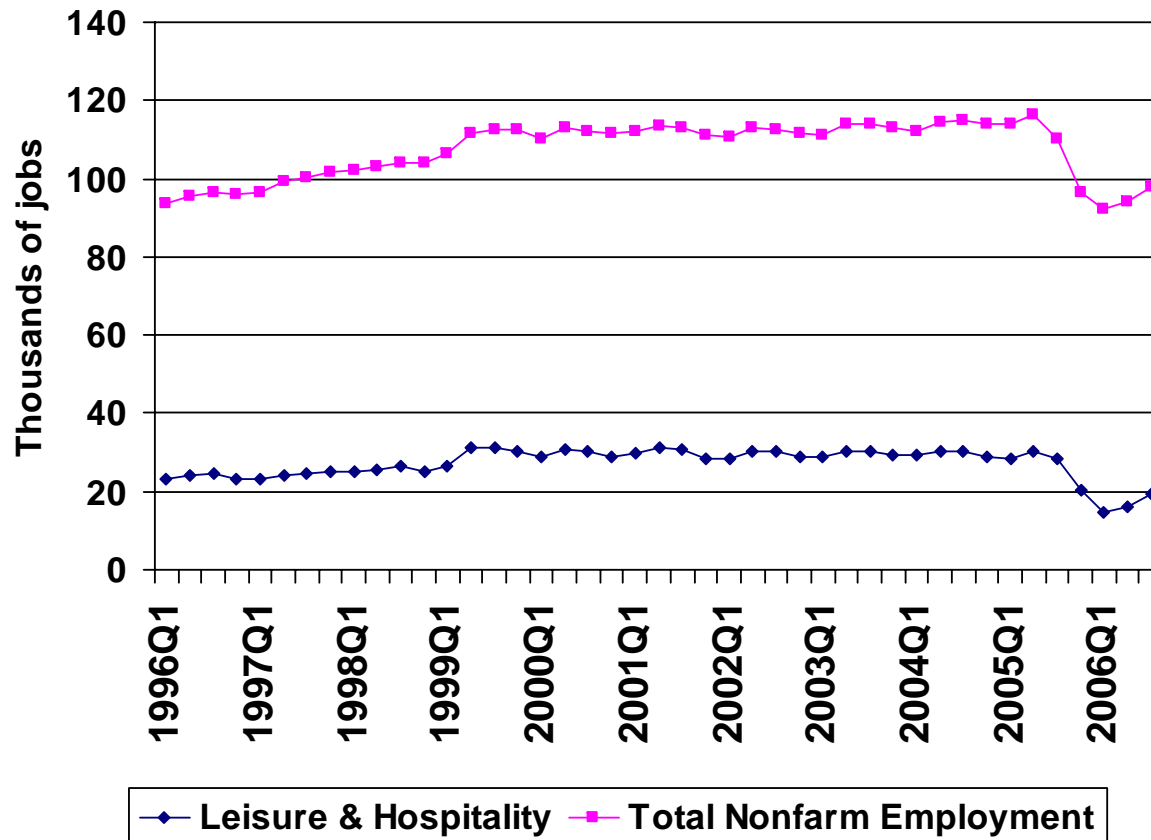


# Casino Revenue





# Biloxi-Gulfport Employment



# New Orleans Post-Katrina Perceptions

NEW  
ORLEANS  
happenin' every day

*Louisiana*

**Wave 2 Interim Report**

**Perceptions of New Orleans/Louisiana Tracking Study**

**March 27, 2006**

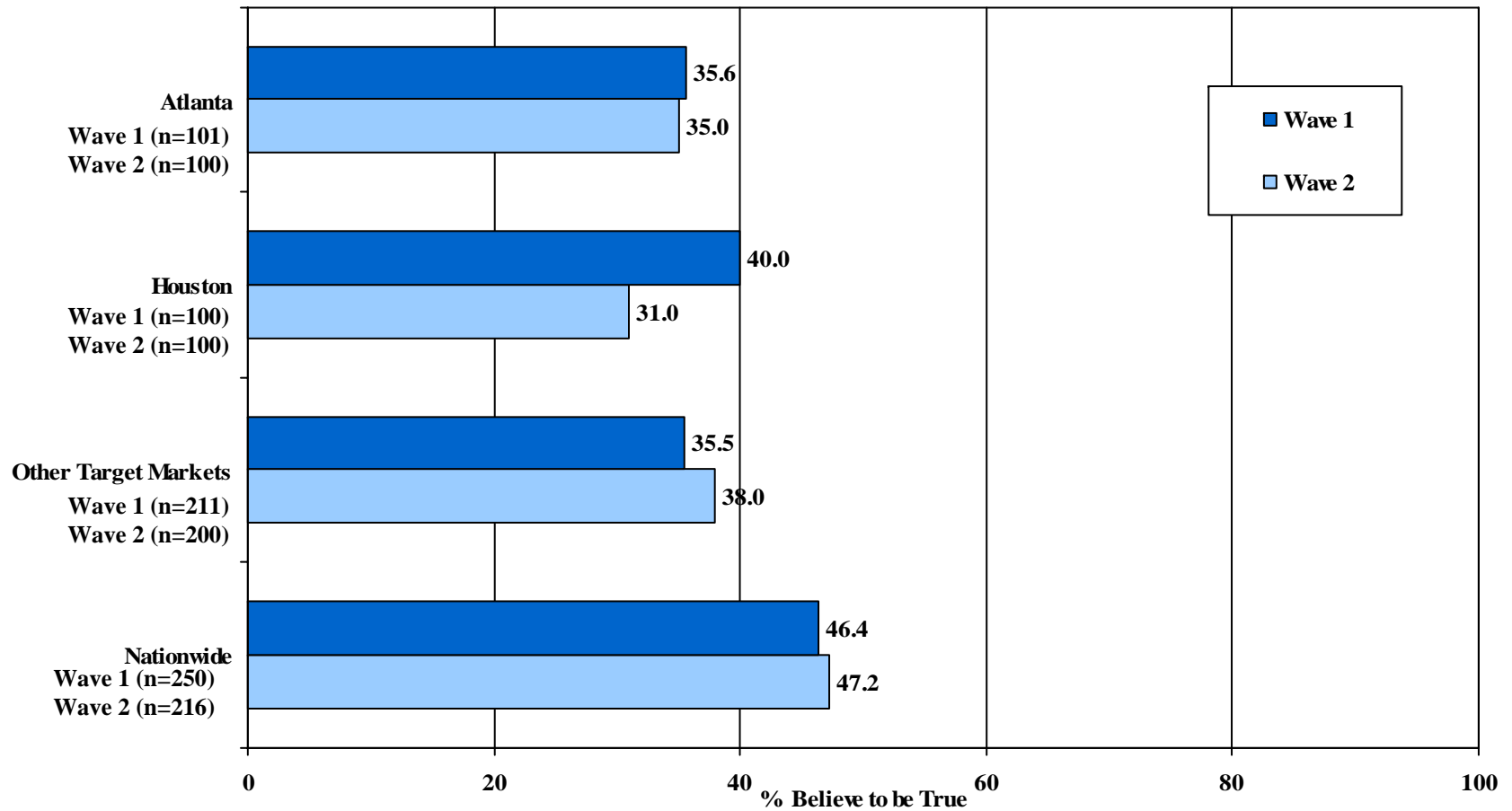
**mdrg**

Market Dynamics Research Group, Inc.

3112 Canal Street • New Orleans, LA 70119 • (504) 821-1910 • [info@mdrginc.com](mailto:info@mdrginc.com)

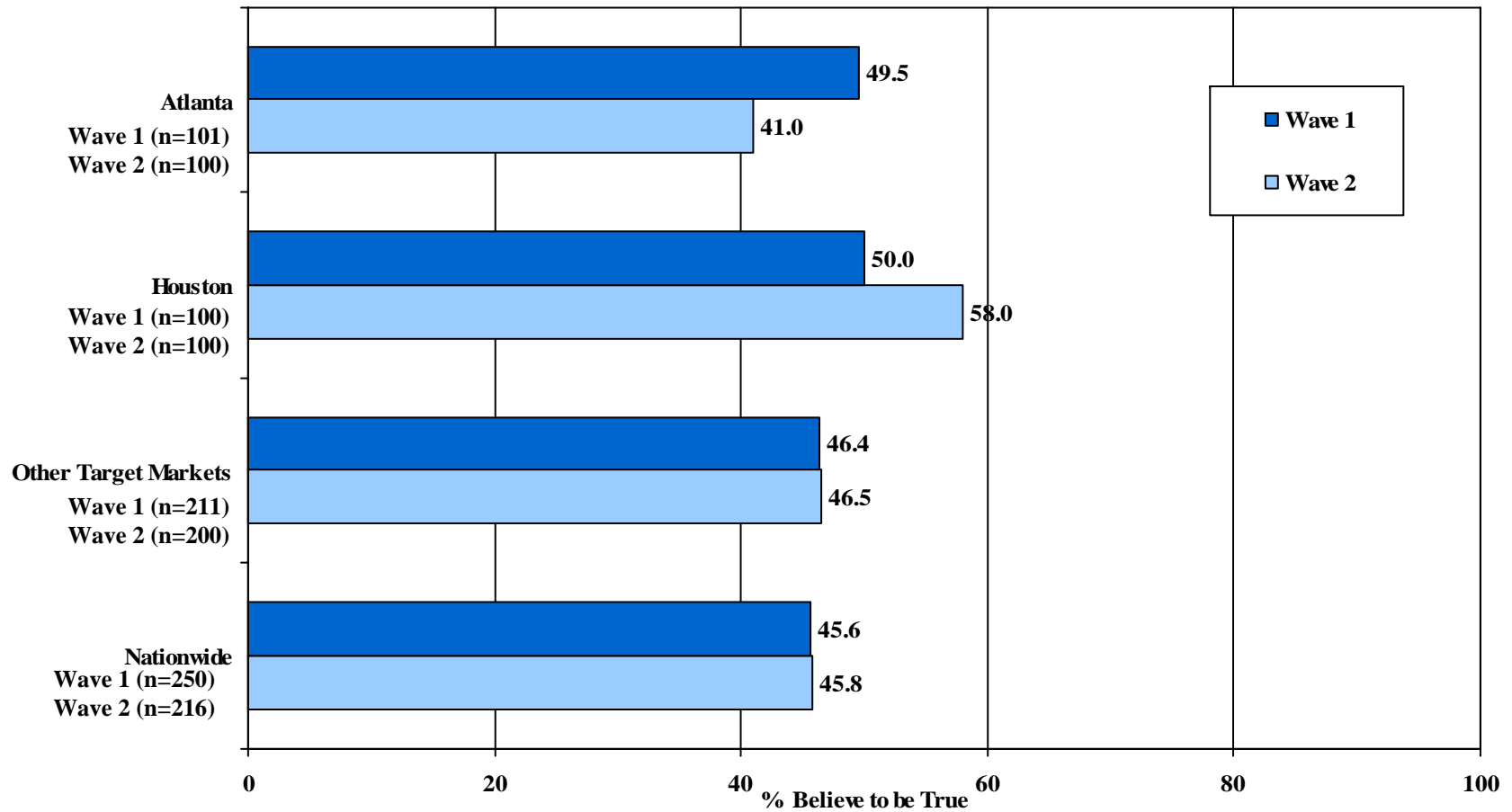
# A. Some neighborhoods still have standing flood water from Hurricane Katrina

BY SAMPLE GROUP



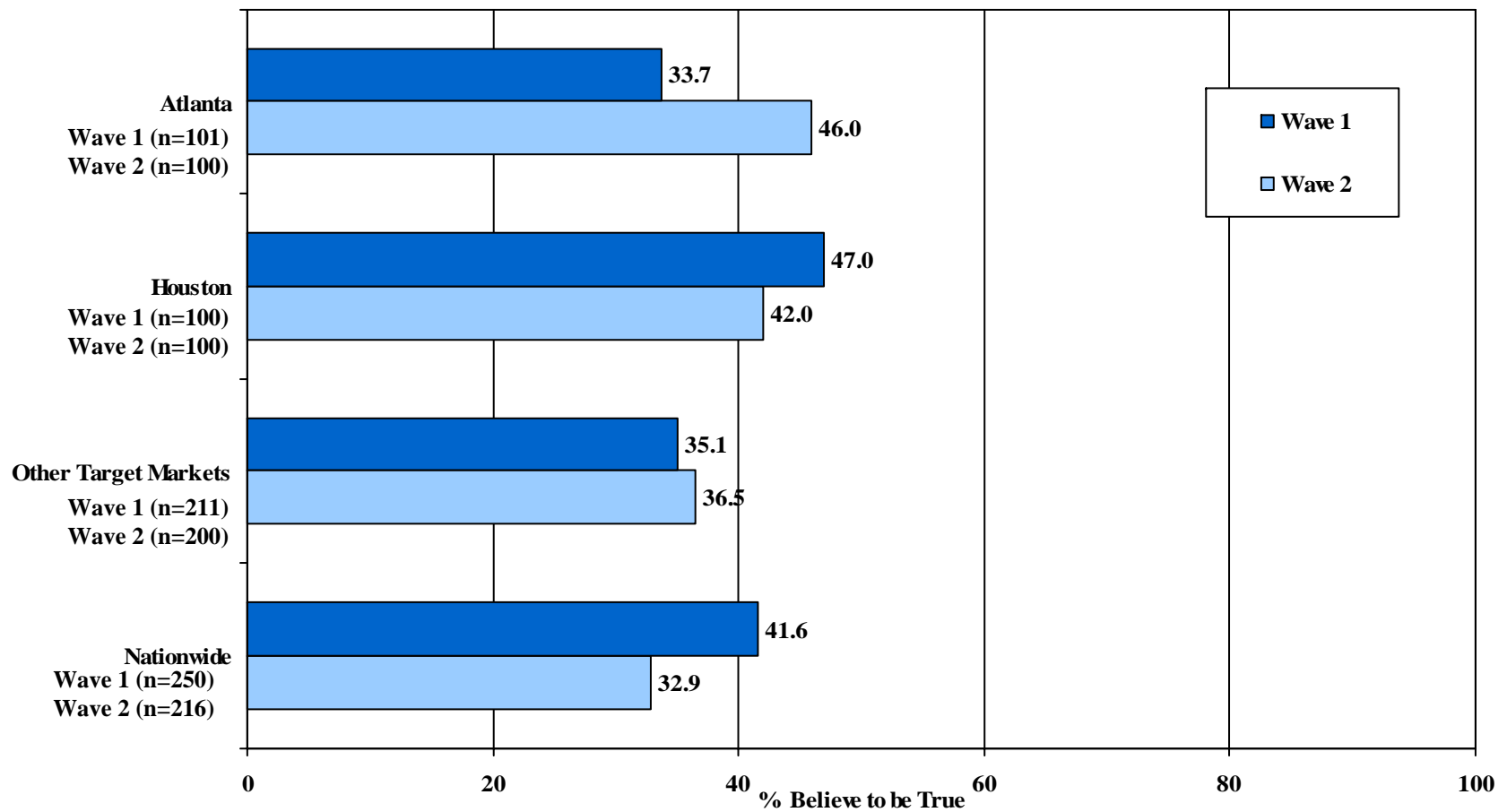
# B. There is a lack of a police presence due to layoffs related to Hurricane Katrina

BY SAMPLE GROUP



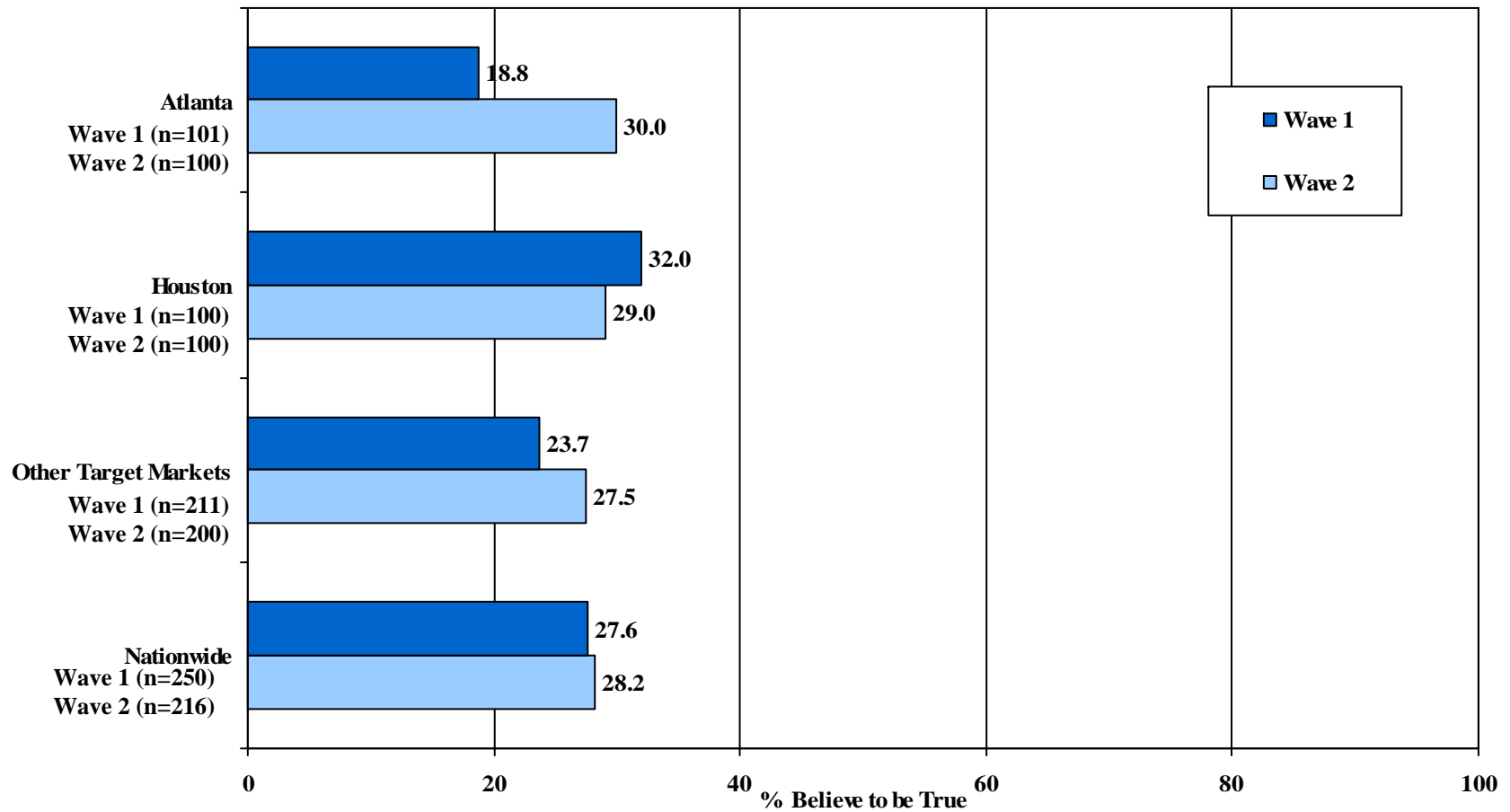
# C. The water treatment and distribution system was damaged due to Hurricane Katrina & water is not safe to drink

BY SAMPLE GROUP



# D. The air is contaminated due to the devastation of Hurricane Katrina and poses a health risk

BY SAMPLE GROUP





# E. Historic Districts, such as the French Quarter are severely damaged/destroyed by Hurricane Katrina

BY SAMPLE GROUP

