



# Atlanta Demographics

Regional Growth  
Aging  
Just Income  
Ethnicity  
Education  
Verdict on the Future

Mike Alexander, AICP

Research Division Chief

Atlanta Regional Commission





# Population Growth



	2000 - 2006		2006		2000	
MSA	#	Rank*	#	Rank	#	Rank
Atlanta	890,242	1	5,138,223	9	4,247,981	11
Dallas	842,423	2	6,003,967	4	5,161,544	5
Houston	824,542	3	5,539,949	6	4,715,407	8
Los Angeles	584,502	6	12,950,129	2	12,365,627	2
New York	495,534	7	18,818,536	1	18,323,002	1
Washington DC	494,217	8	5,290,400	8	4,796,183	7
Miami	456,293	9	5,463,857	7	5,007,564	6
Chicago	407,432	10	9,505,748	3	9,098,316	3
Philadelphia	139,595	26	5,826,742	5	5,687,147	4
Detroit	16,409	149	4,468,966	10	4,452,557	9

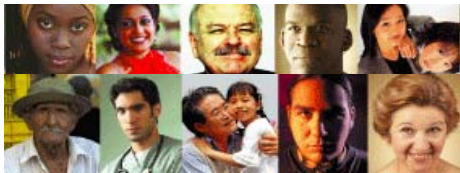
Source: U.S. Census

**MSA: Metropolitan Statistical Area (28-County Area)**

\*Atlanta MSA was 12th in population in 1990; 11th in 2000; 9th in 2003; 4th in population increase, 1990-2000, and 1st in population increase between 2000 and 2006.

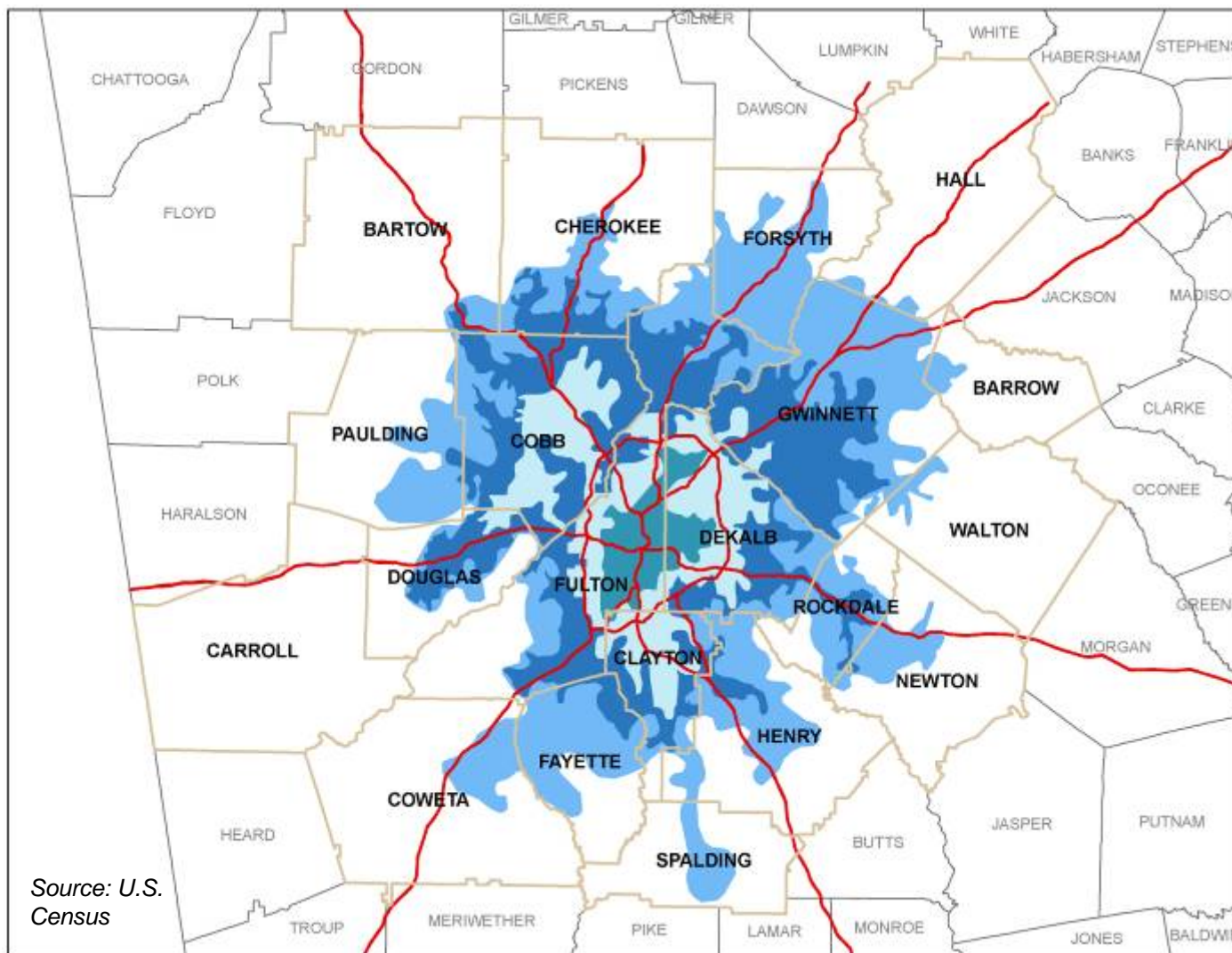
Regional  
Growth



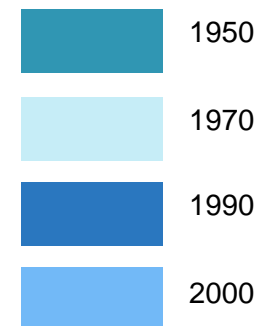


# How We Have Grown (To Where)

Atlanta Urbanized Area 1950 - 2000



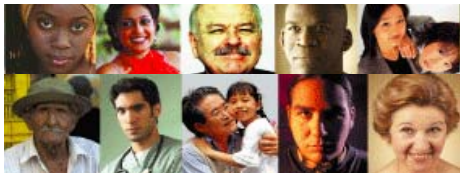
Source: U.S. Census



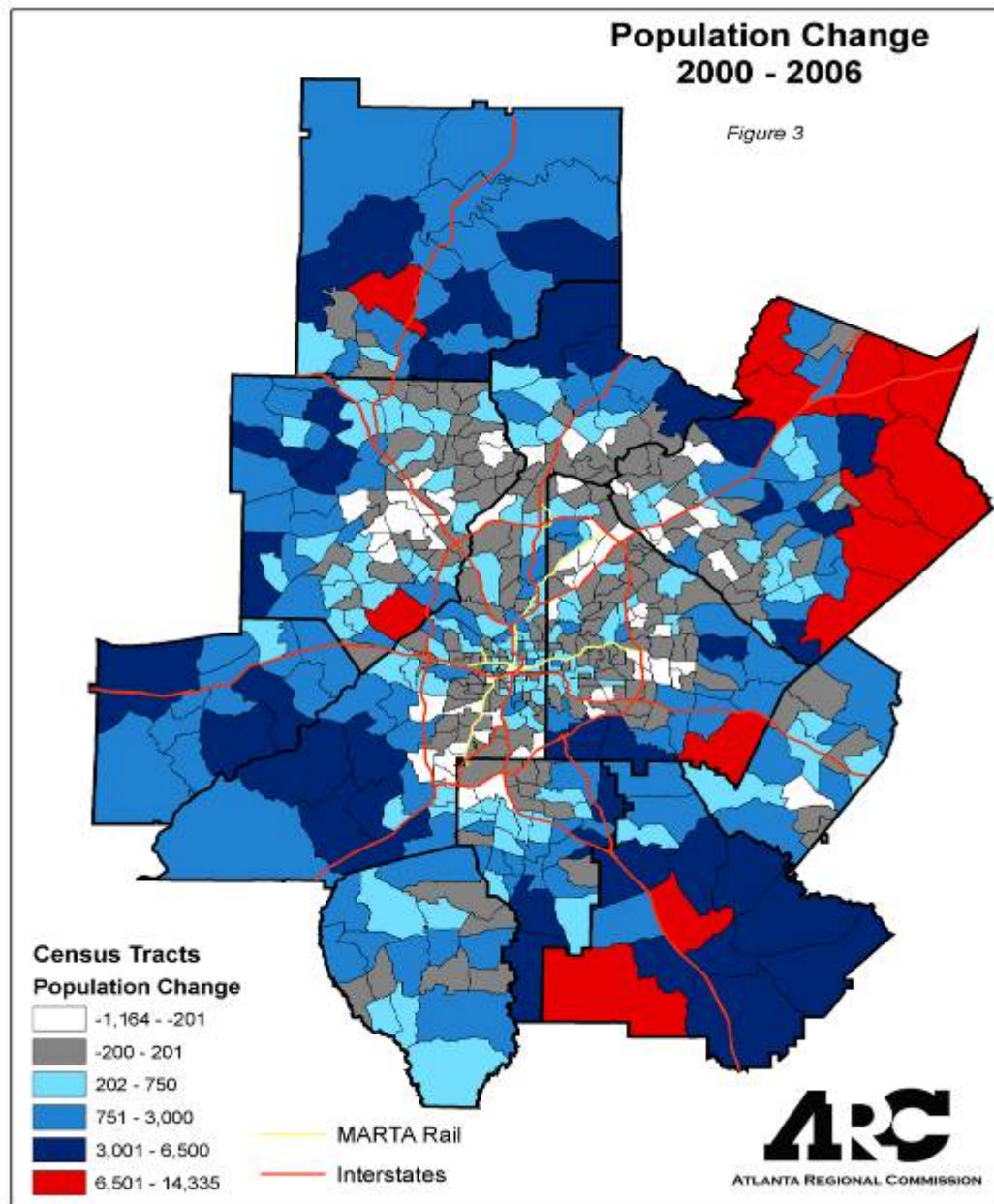
Regional Growth







# 10-County Population in 2006: 3,925,400



That is greater  
than the  
population of  
24 states!

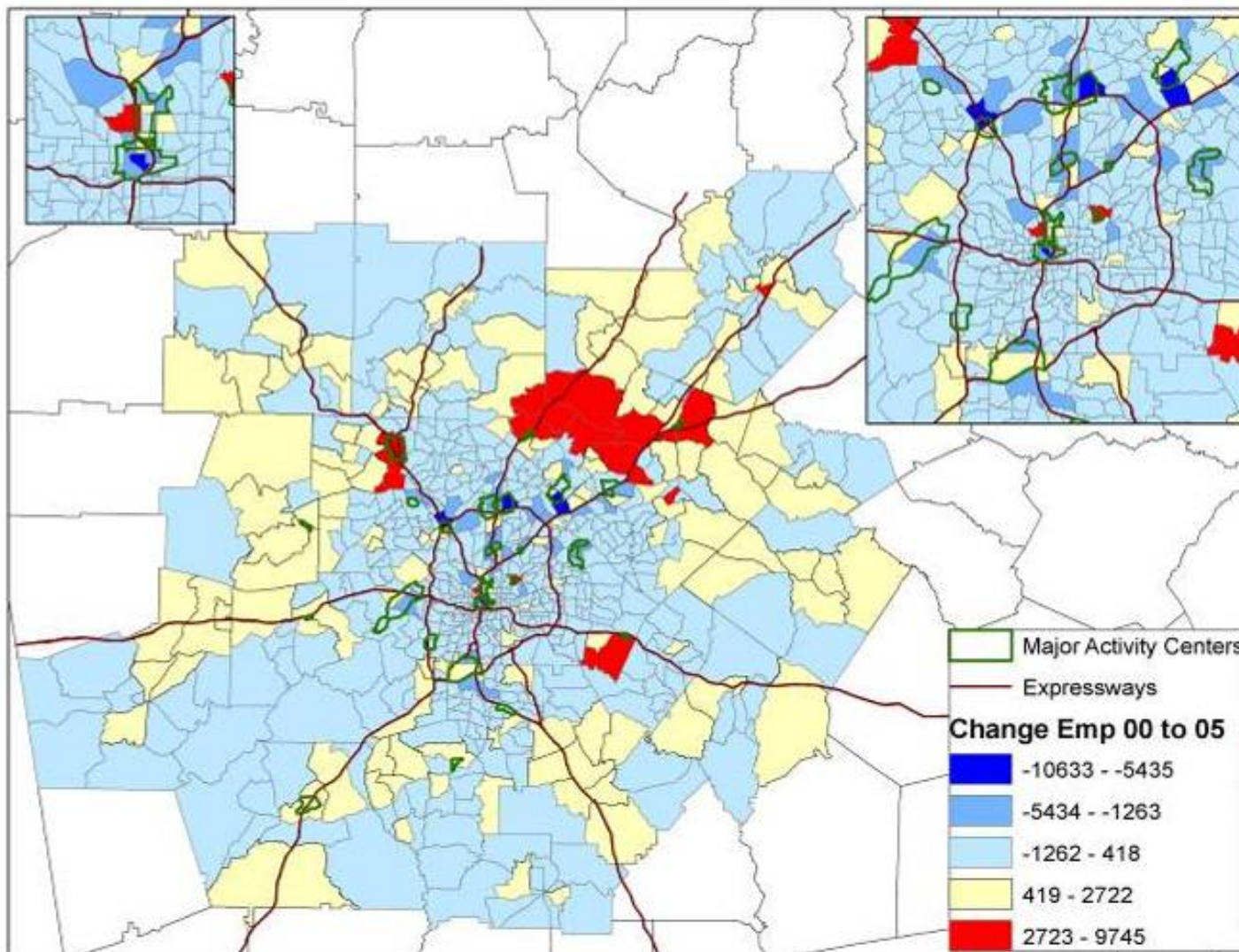
Source: ARC population estimates

Regional Growth





# Employment 2000 to 2005



Source:  
ARC employment  
estimates

Regional Growth



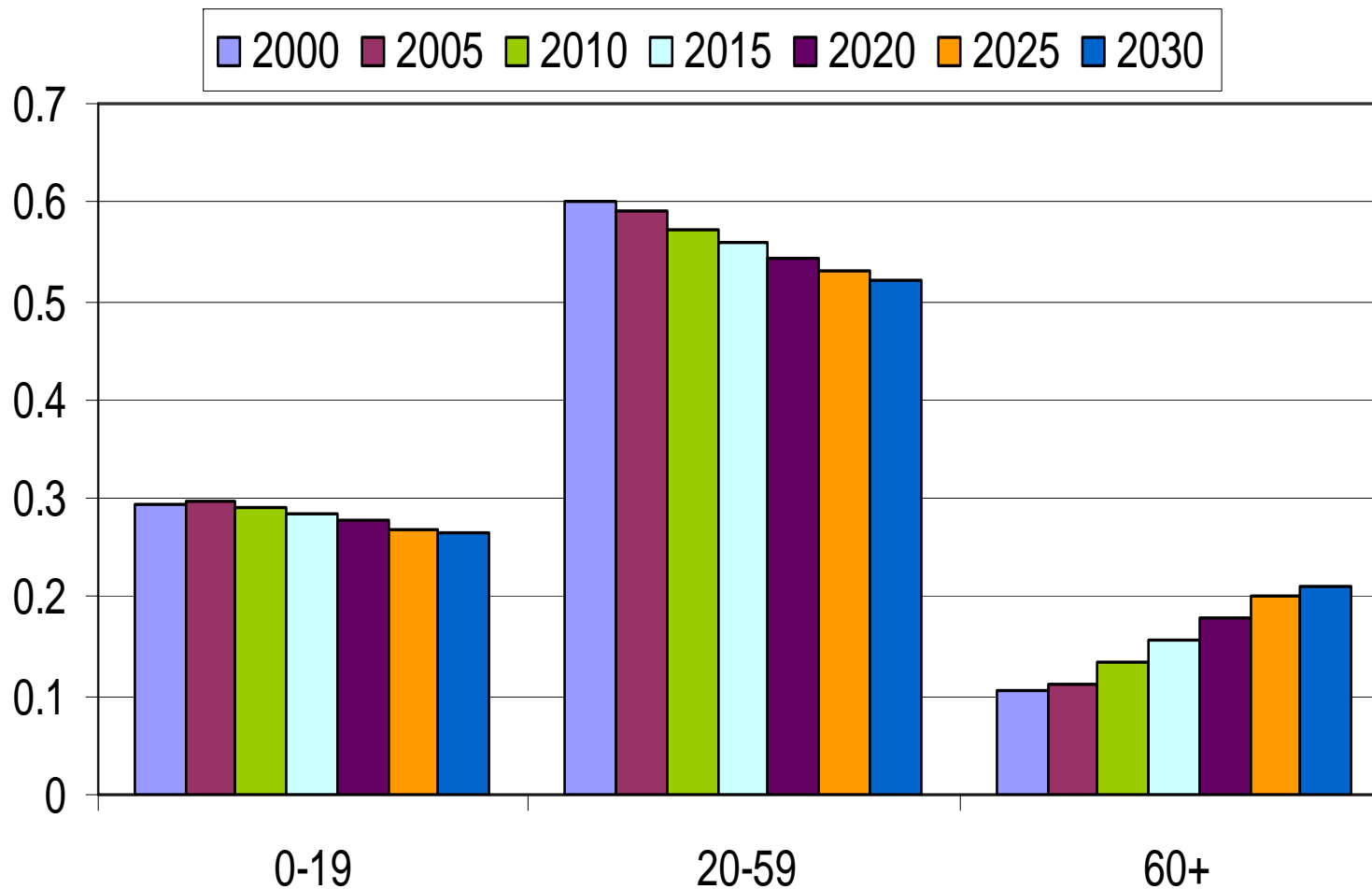




# Growing Older...but still Young



## ARC 20-County Forecasts



*Aging*





# Age Another Way



Over 60      2000: 1 in 10      2030: 1 in 5

## US Dependency Ratio: (Elderly to Workers)

2010: 246 per 1,000

2030: 411 per 1,000

***Georgia is the 3rd youngest state: median age 34.3***

Utah (1) 28.5, Maine (50) 41.2

Atlanta Region 34.1 US 36.4

*Aging*





## 55+ Population in the Atlanta Region: Practices, Preferences and Potential



**18.74...**      **Average years in current house**

**37.08...**      **Average years lived in the region**

**64%...**      **Will remain in house as long as possible**

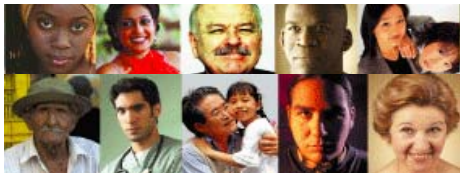
**52%...**      **If did move, would move within region**

*SOURCE: 2006 Survey of 55+ Population in Atlanta Region  
The Atlanta Regional Commission and the Carl Vinson Institute*

*Aging*







# 55+ Population in the Atlanta Region: Practices, Preferences and Potential



## Survey Respondents Said:

<u>NOW</u>	Mode of Transportation	<u>FUTURE</u>
88%	Drive own car	N/A
7%	Driven by others	57%
4%	Public transportation	13%
1%	Other	10%
	Don't Know	21%

SOURCE: 2006 Survey of 55+ Population in Atlanta Region  
The Atlanta Regional Commission and the Carl Vinson Institute

Aging





# Transportation



## Means to Work 2000

	Total Pop 16+	Drive Alone %	Carpool %	Transit %	Walk %	Work at home %
<b>Hispanic</b>	126,823	44.2%	41.7%	6.9%	2.9%	1.5%
<b>Blacks</b>	526,096	70.5%	16.0%	9.3%	1.7%	1.7%
<b>Asians</b>	64,062	72.9%	18.8%	2.4%	2.1%	2.6%
<b>Whites</b>	1,375,116	81.4%	11.0%	1.3%	1.0%	4.3%

Source: U.S. Census

*Just Income*





# Transportation

## What are the Implications?



Urbanized Areas	Annual Delay per Traveler		Congestion Cost per Traveler		Excess Fuel Consumed per Traveler	
	2003 Hours	Rank*	2003 Value	Rank*	2003 Gallons	Rank*
<b>13 Very Large Areas (3+million)</b>						
Los Angeles-Long Beach-Santa Ana	93	1	\$1,598	1	61	1
San Francisco-Oakland	72	2	\$1,224	2	45	2
Washington DC	69	3	\$1,169	3	42	4
<b>Atlanta</b>	<b>67</b>	<b>4</b>	<b>\$1,127</b>	<b>4</b>	<b>46</b>	<b>3</b>
Houston	63	5	\$1,061	5	37	7
Dallas-Fort Worth	60	6	\$1,012	6	33	11
Chicago	58	7	\$976	7	34	8
Detroit	57	8	\$955	8	34	8
Miami	51	13	\$869	13	30	16
Boston	51	13	\$853	15	30	16
New York-Newark	49	18	\$824	19	24	27
Phoenix	49	18	\$831	18	28	19
Philadelphia	38	27	\$641	27	21	32
<b>Average</b>	<b>61</b>		<b>\$1,038</b>		<b>36</b>	

\* Rank out of all 85 Urban Areas

Source: Texas Transportation Institute

Just Income







# Poverty and Income



## Poverty Status and Family Income 2000

	Total Pop	Poverty Status %	Median Family Income
<b>Hispanic</b>	261,676	18.65%	\$ 40,361
<b>Blacks</b>	1,154,502	16.31%	\$ 42,624
<b>Asians</b>	130,533	9.46%	\$ 56,944
<b>Whites</b>	2,554,575	5.63%	\$ 67,923

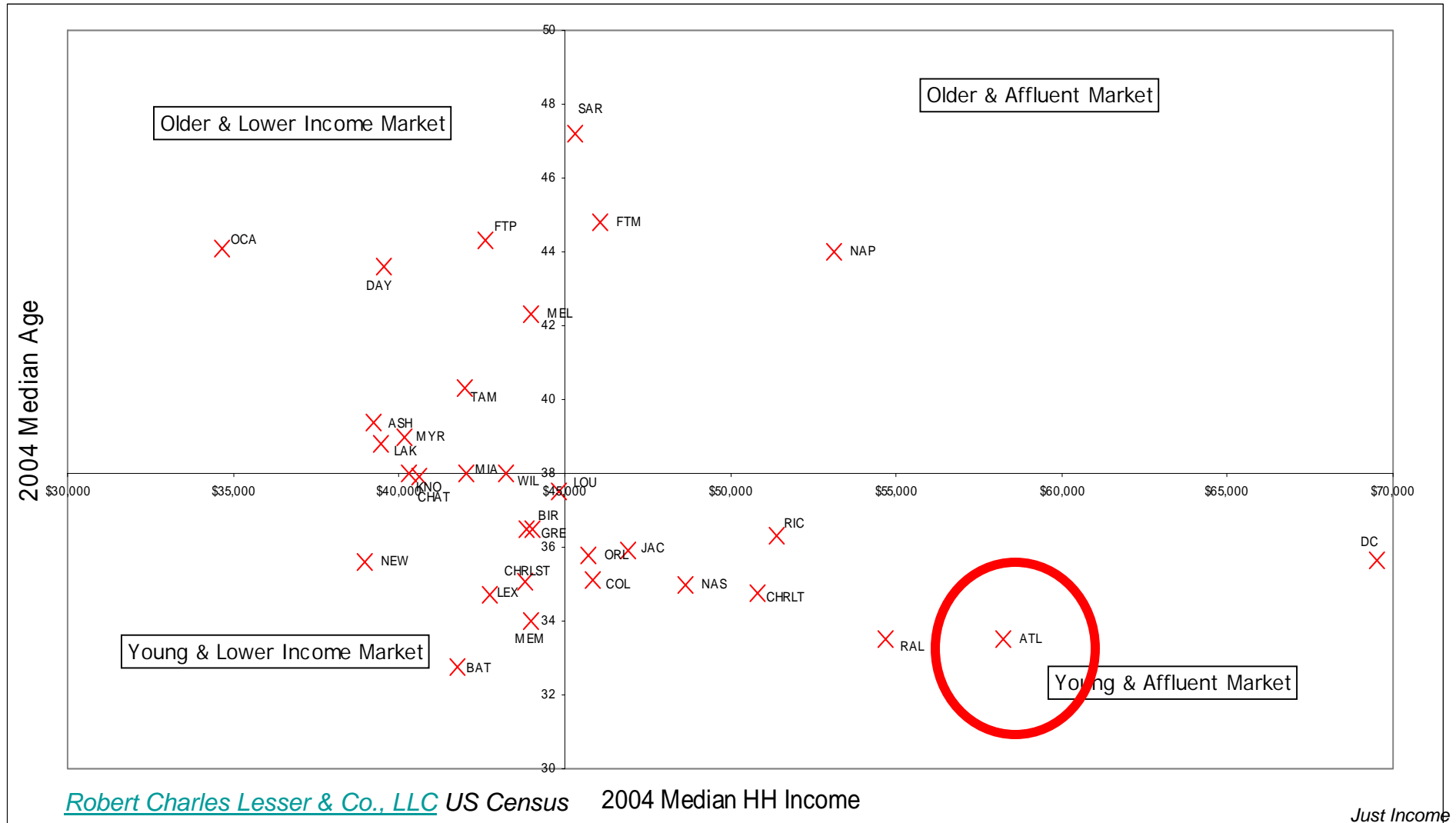
Source: U.S. Census

*Just Income*





# Demographic Composition

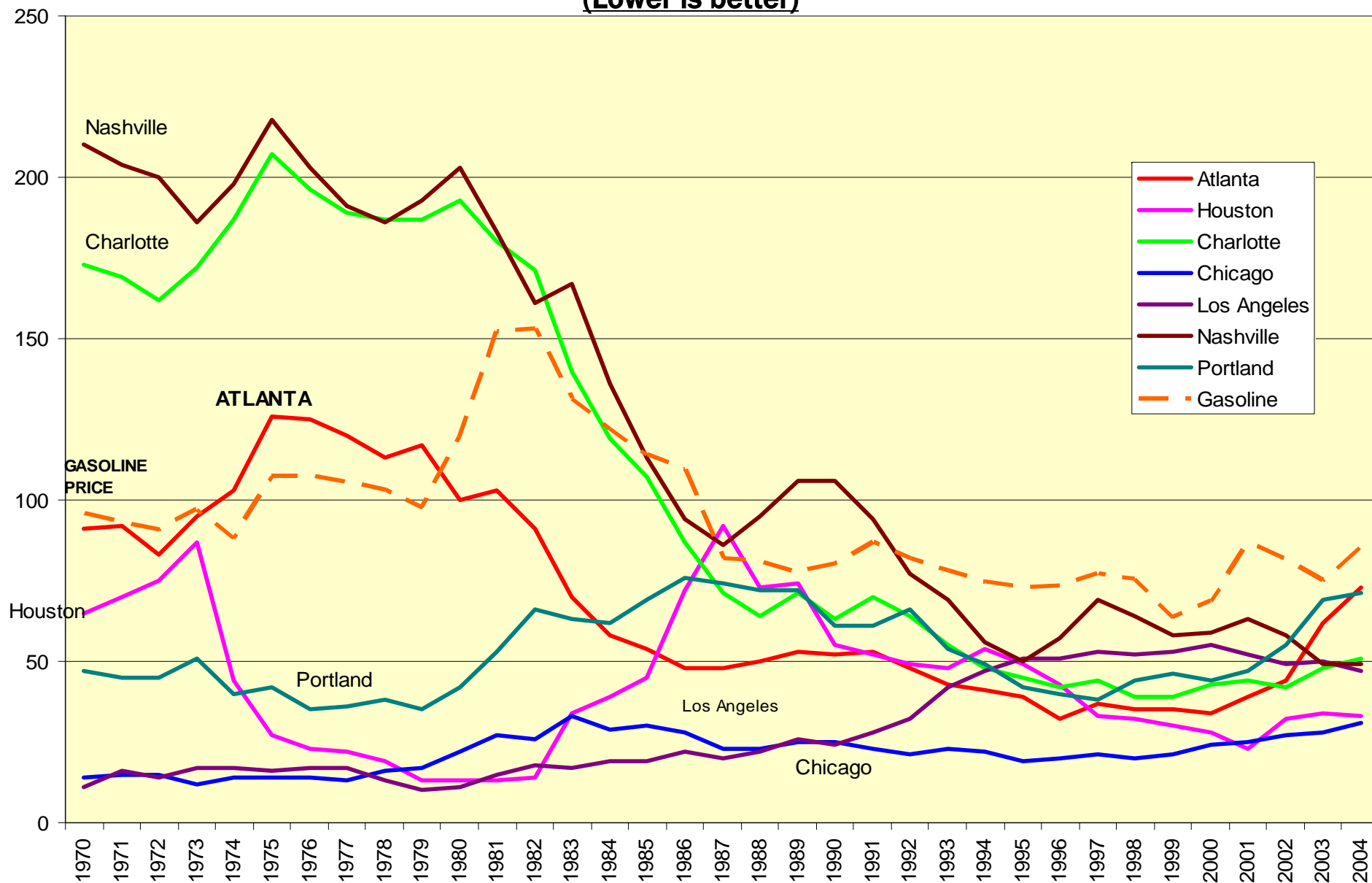




# MSA Per Capita Income Rank 1970 to 2004



(Lower is better)







# Becoming a Diverse Region



## 1980 - 2000 Population % Increases (by race and ethnicity)

- Black, non-Hispanic 132.6%
- Hispanic 1,032%
- Asian 1,090%
- Non-White, non-Hispanic 176.7%
- White, non-Hispanic 45.6%

Source: U.S. Census

*Ethnicity*





# Becoming More Diverse



## Percentage Change in Population from 2000 to 2004

Rank		Hispanic		Black		Asian
1	Cape Coral	55.4%	Las Vegas	22.7%	Las Vegas	38.5%
2	Charlotte	49.8%	Phoenix	19.2%	Riverside	31.1%
3	Raleigh	46.7%	Orlando	18.4%	Orlando	30.2%
4	Nashville	44.9%	Minneapolis	16.2%	<b>Atlanta</b>	<b>28.5%</b>
5	Indianapolis	44.3%	Raleigh	15.2%	Stockton, CA	28.4%
6	<b>Atlanta</b>	<b>41.0%</b>	<b>Atlanta</b>	<b>15.0%</b>	Tampa	28.4%
7	Naples	38.7%	Providence	14.4%	Austin, TX	28.2%
8	Lakeland	38.3%	Riverside	14.3%	Phoenix	27.0%
9	Sarasota	38.0%	Tampa	14.0%	Sacramento	25.6%
10	Las Vegas	35.1%	Charlotte	13.7%	Dallas	24.8%

Source: Brookings Analysis, U.S. Census

Ethnicity





# Net Change in Race/Ethnicity



## Change in Population from 2000 to 2004

Rank		Hispanic		Black		White
1	Los Angeles	435,674	Atlanta	183,817	Phoenix	151,363
2	Riverside	333,527	Miami	96,934	Riverside	86,654
3	Dallas	290,590	Dallas	74,562	Atlanta	80,062
4	New York	288,325	Washington DC	64,439	Las Vegas	79,909
5	Houston	268,834	Houston	56,694	Dallas	76,069
6	Miami	261,354	Philadelphia	42,997	Sacramento	73,118
7	Phoenix	226,472	Orlando	41,729	Portland	62,812
8	Chicago	217,047	Charlotte	40,703	Houston	59,172
9	Washington DC	114,039	Baltimore	38,759	Tampa	58,123
10	Atlanta	112,362	Riverside	35,292	Washington DC	58,033

Source: Brookings Analysis, U.S. Census

Ethnicity







# Race/Ethnicity Change



## Share of Change in Population from 2000 to 2004

	Change 2000 to 2004	Population Share of Change (%)				
		White	Black	Hispanic	Asian	Other
Las Vegas	18.5%	31	11	42	11	5
Riverside	15.7%	17	7	65	8	3
McAllen, TX	14.7%	5	1	93	1	-
Stockton, CA	14.4%	4	12	57	23	5
Raleigh	13.7%	49	22	20	7	3
Phoenix	13.3%	35	5	52	4	4
Orlando	12.4%	23	20	47	7	3
Austin, TX	11.7%	36	5	48	9	2
Sacramento	11.5%	35	7	31	20	6
Bakersfield	10.7%	9	5	78	6	2
Charlotte	10.1%	36	30	26	6	2
Sarasota	10.0%	62	8	25	3	2
<b>Atlanta</b>	<b>10.0%</b>	<b>19</b>	<b>43</b>	<b>26</b>	<b>9</b>	<b>2</b>
Dallas	9.7%	15	15	58	10	3
Houston	9.3%	13	13	61	11	2

Source: Brookings Analysis, U.S. Census

Ethnicity





# A Well-Educated Region



- In **top 10 of metro areas** in key measures of higher education activity
- **6th** among the 60 MSAs studied\* in **total number** of students attending degree-granting institutions
- **4th** in number of **Black students** enrolled, a focal point for higher education opportunity for African-Americans
- **6th** highest number of degrees conferred at Bachelor's level and higher

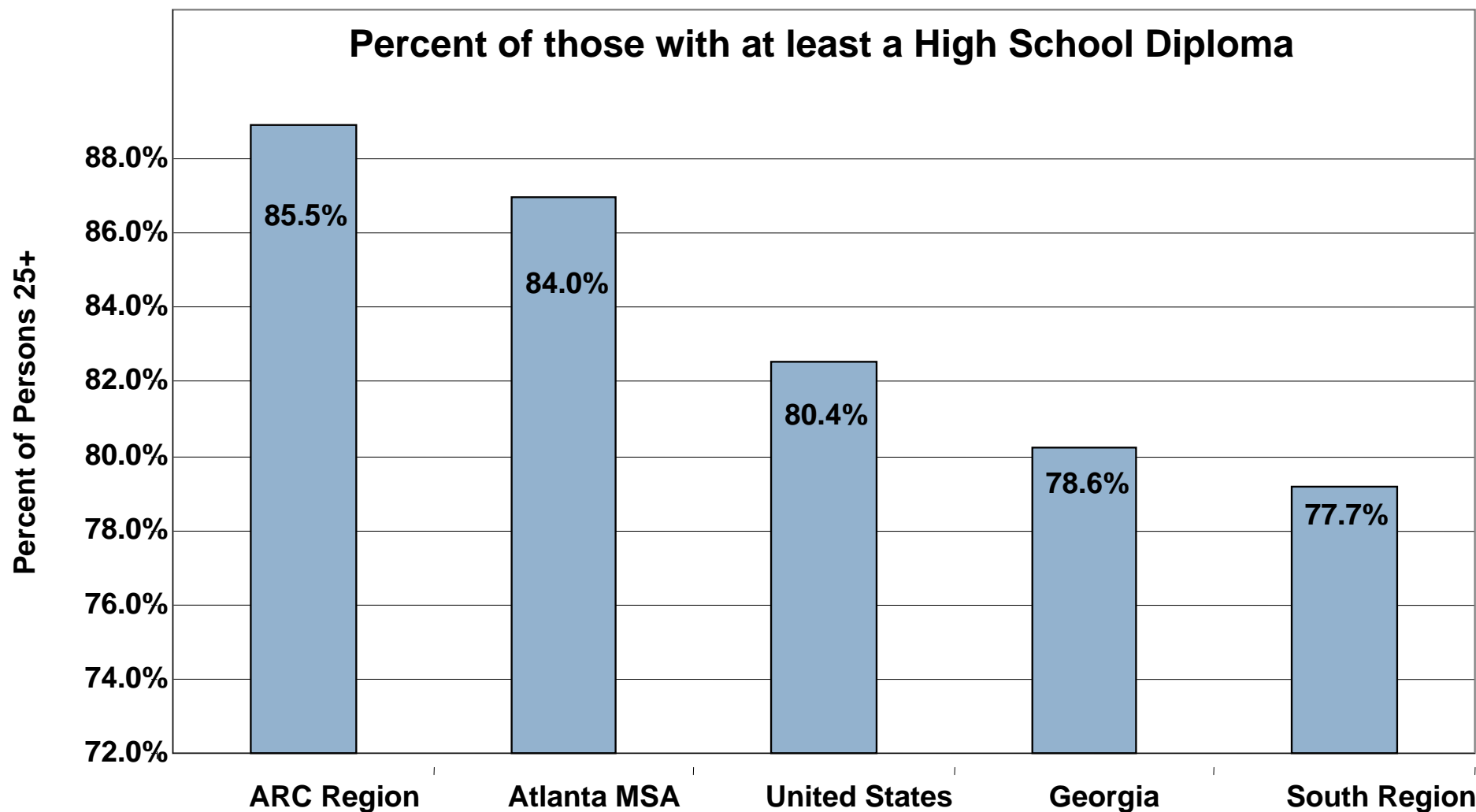
\* ARCHE report, *Higher Education in America's Metropolitan Areas*  
<http://www.atlantahighered.org>

Education





# A Well-Educated Region

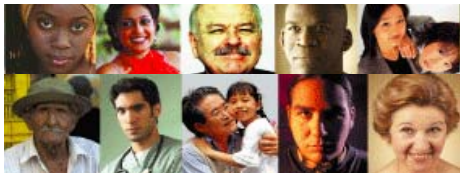


Source: Census 2000

Education







# Educational Attainment



	White	Black	Asian	Hispanic
Less than 9th grade	3%	3%	6%	26%
9th to 12th grade, no diploma	7%	11%	8%	13%
High school graduate (includes equivalency)	25%	30%	21%	28%
Some college, no degree	20%	23%	11%	12%
Associate's degree	6%	8%	4%	3%
Bachelor's degree	26%	17%	28%	12%
Graduate degree	13%	8%	22%	5%

Source: 2005 American Community Survey

Education





# Comparison of Educational Attainment



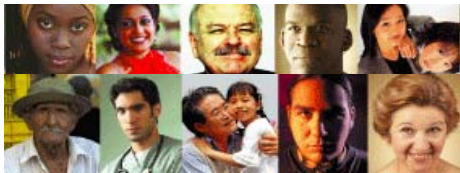
Black				
	Atlanta	Houston	Miami	Phoenix
Less than 9th grade	3%	4%	9%	5%
9th to 12th grade, no diploma	11%	12%	16%	10%
High school graduate	30%	31%	33%	25%
Some college, no degree	23%	26%	18%	32%
Associate's degree	8%	6%	8%	10%
Bachelor's degree	17%	14%	10%	14%
Graduate degree	8%	7%	5%	6%
White				
	Atlanta	Houston	Miami	Phoenix
Less than 9th grade	3%	2%	2%	1%
9th to 12th grade, no diploma	7%	6%	6%	5%
High school graduate	25%	23%	28%	24%
Some college, no degree	20%	24%	21%	28%
Associate's degree	6%	7%	8%	9%
Bachelor's degree	26%	25%	22%	21%
Graduate degree	13%	12%	13%	11%

Asian				
	Atlanta	Houston	Miami	Phoenix
Less than 9th grade	6%	7%	9%	6%
9th to 12th grade, no diploma	8%	7%	7%	6%
High school graduate	21%	15%	17%	14%
Some college, no degree	11%	12%	14%	14%
Associate's degree	4%	6%	7%	5%
Bachelor's degree	28%	31%	30%	29%
Graduate degree	22%	22%	16%	24%
Hispanic				
	Atlanta	Houston	Miami	Phoenix
Less than 9th grade	26%	30%	15%	25%
9th to 12th grade, no diploma	13%	19%	12%	19%
High school graduate	28%	25%	27%	29%
Some college, no degree	12%	13%	16%	16%
Associate's degree	3%	4%	8%	5%
Bachelor's degree	12%	7%	15%	5%
Graduate degree	5%	3%	8%	2%

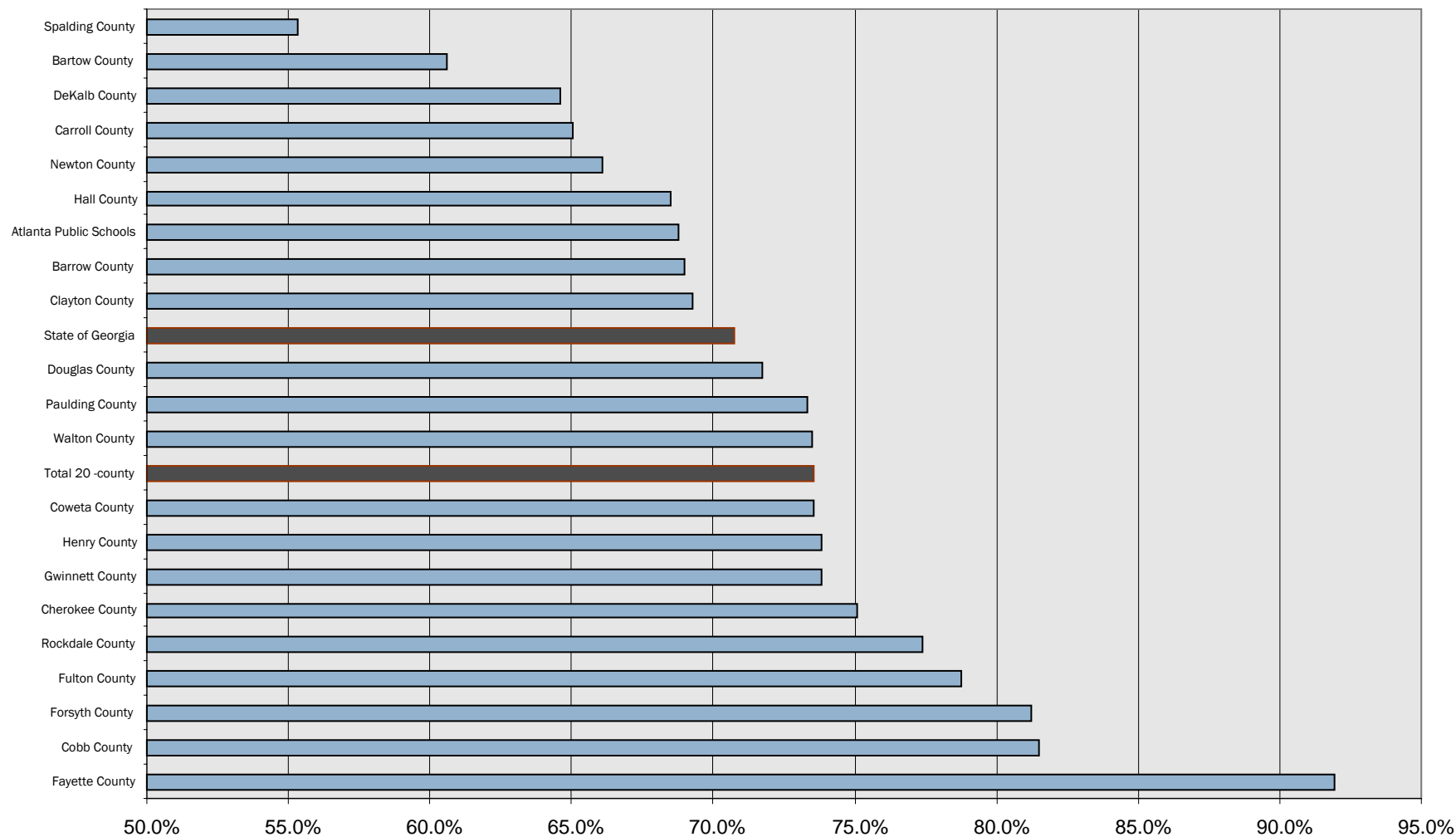
Source: 2005 American Community Survey

Education





# High School Graduation Rates 2005-2006



Source: Georgia Department for Education

Education

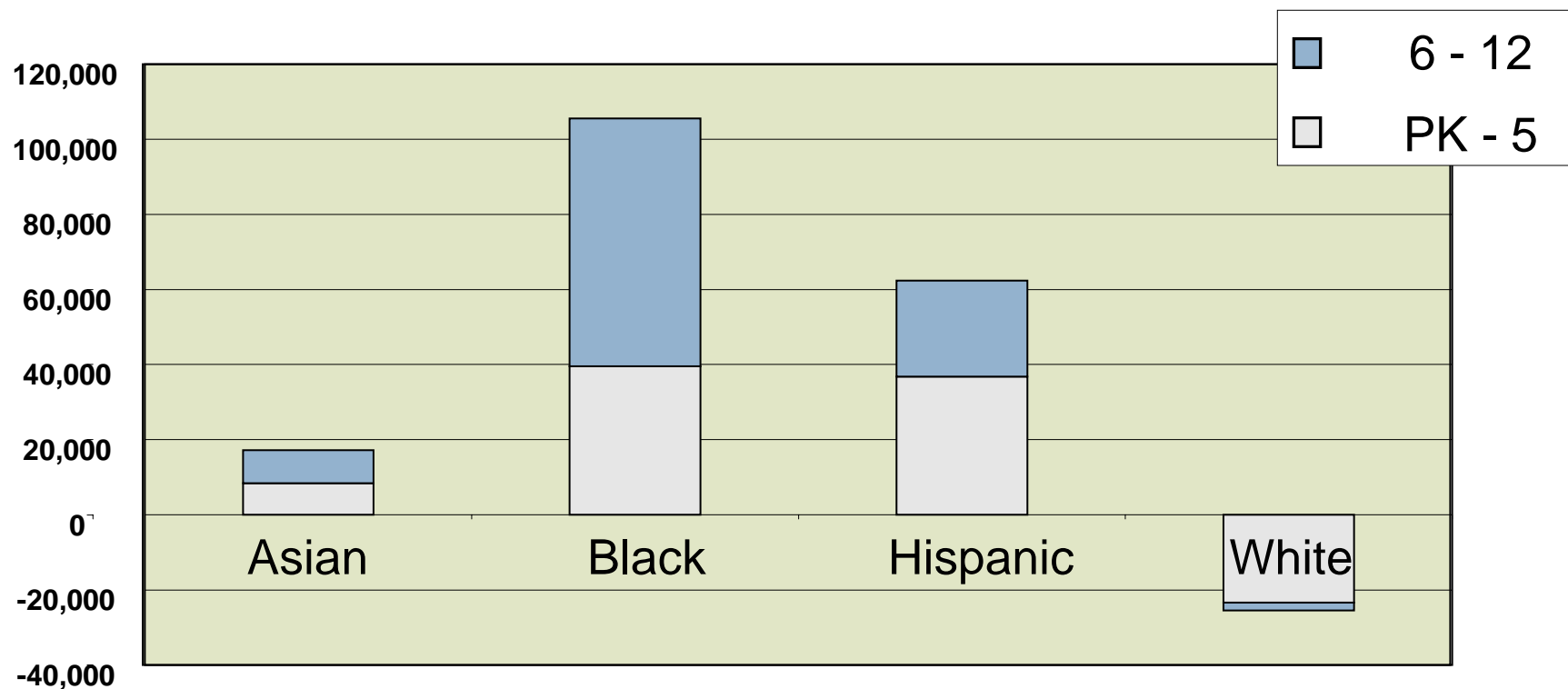




# Change in School Enrollment



## Public School Enrollment 1995 – 2005 By Grade



Source: Georgia Department for Education

Education



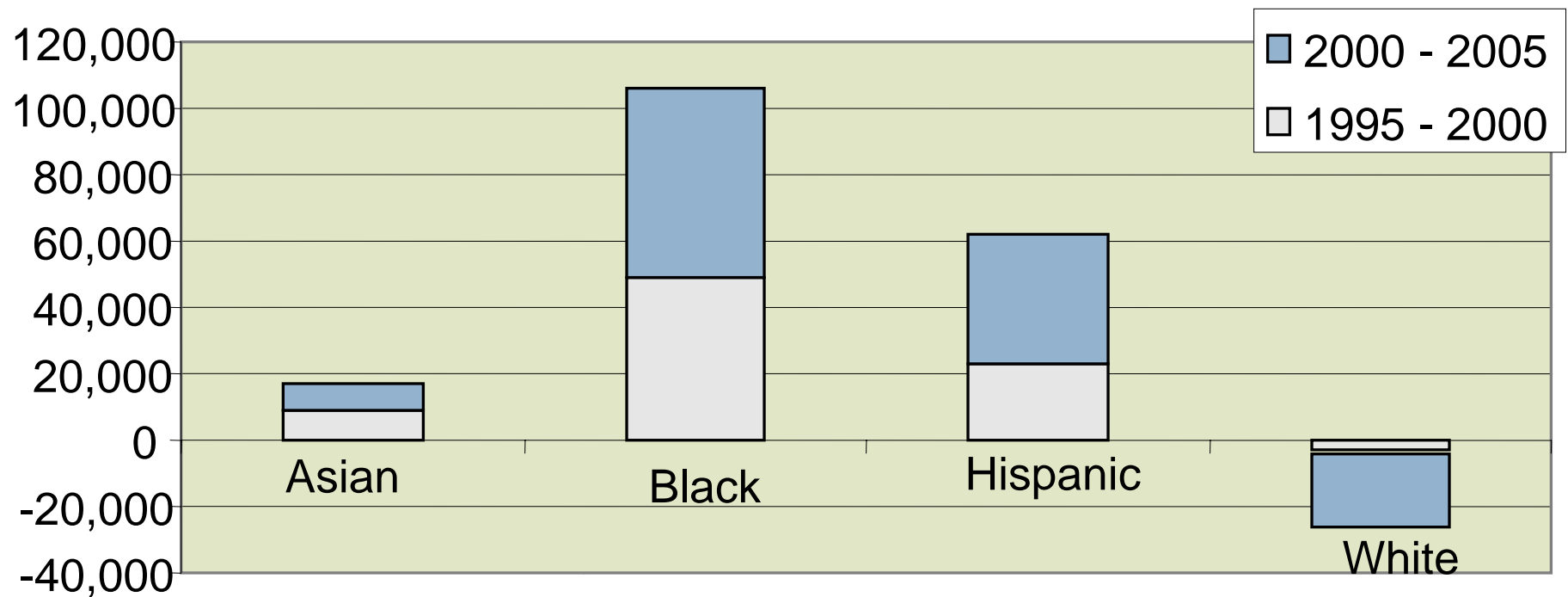




# Public School Diversity



## Public School Enrollment 1995 - 2005 By Year



Source: Georgia Department for Education

Education





## More "Non-Traditional" Households



<u>Household Type</u>	<u>1970</u>	<u>2000</u>	<u>2030</u>
Family HH(2 parent)	81%	69%	65%
With Children	40%	32%	21%
Non-family HH	19%	31%	35%
Living Alone	17%	25%	29%

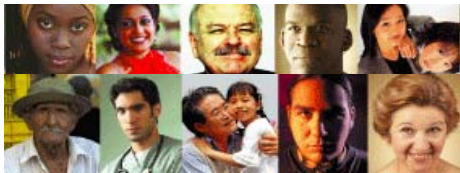
**But: 450,000 More School Age Children by 2030** (20-County Region)

**920,000 in 2000      1,370,000 in 2030** (20-County Region)

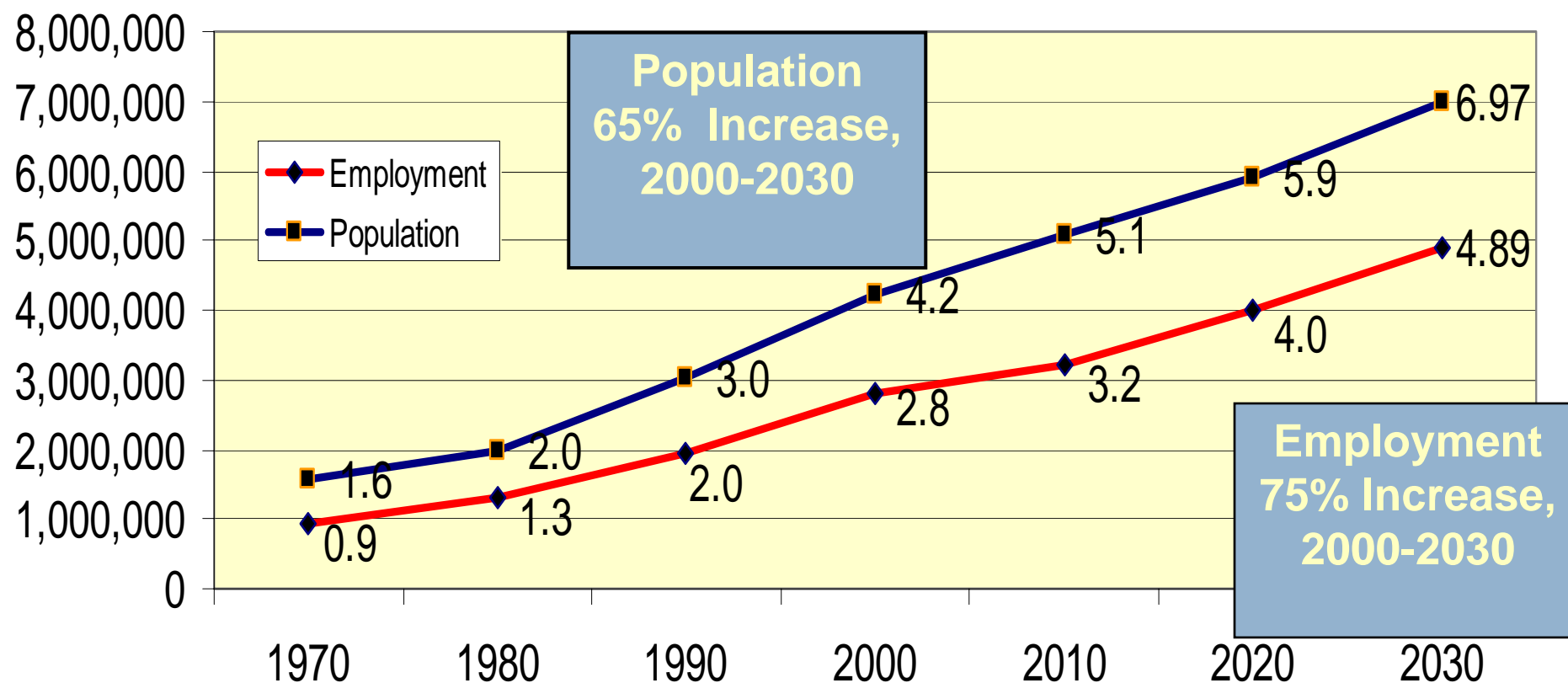
Source: Dr. Chris Nelson and ARC Envision6 Forecasts

*Verdict on the Future*





# ARC 20-County Forecasts



*Verdict on the Future*

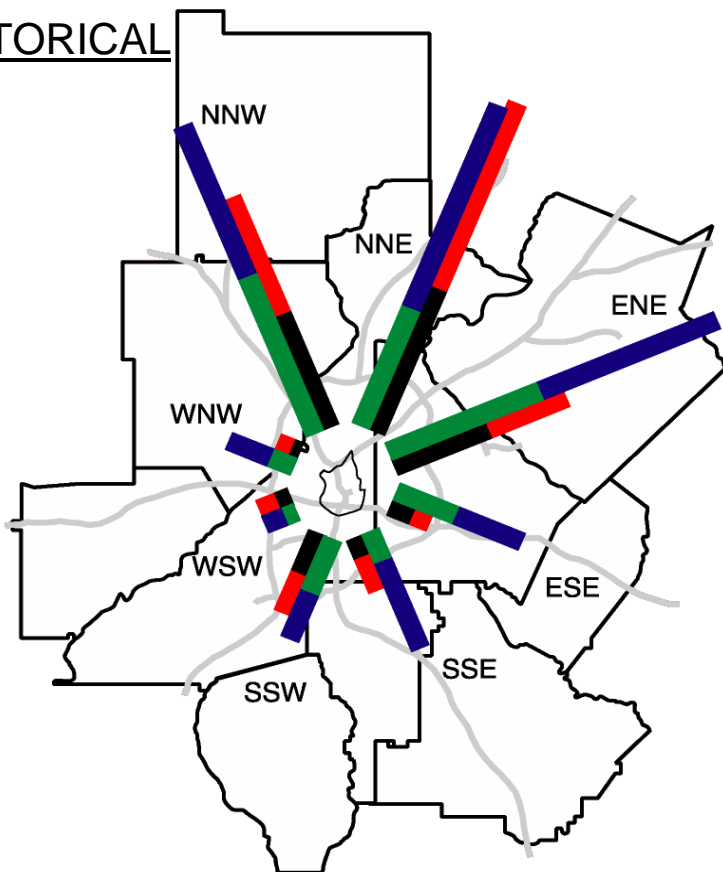




# Growth Going Everywhere

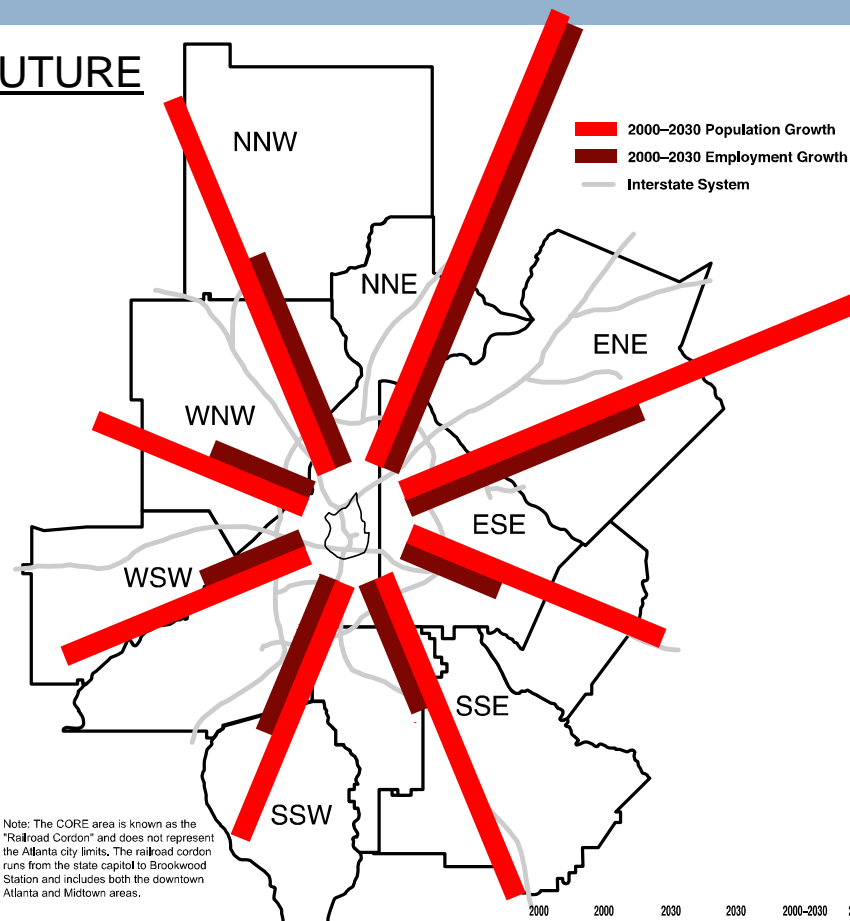


## HISTORICAL



- 1980-1990 Population Change
- 1990-2000 Population Change
- 1980-1990 Employment Change
- 1990-2000 Employment Change

## FUTURE



Note: The CORE area is known as the "Railroad Cordon" and does not represent the Atlanta city limits. The railroad cordon runs from the state capital to Brookwood Station and includes both the downtown Atlanta and Midtown areas.

Octant	2000 Population	2000 Employment	2030 Population	2030 Employment	2000-2030 pop change	2000-2030 emp change
ENE	765,651	335,786	1,237,969	578,650	472,318	242,864
ESE	455,934	118,769	719,039	218,541	263,105	99,772
SSE	370,065	144,252	704,482	277,821	334,417	133,569
SSW	412,871	211,364	677,649	373,036	264,778	161,672
WSW	261,462	106,669	515,841	210,047	254,379	103,378
WNW	273,214	59,003	491,792	162,846	218,578	103,843
NNW	762,785	428,083	1,151,682	646,938	388,897	218,855
NNE	804,992	628,243	1,295,252	1,092,404	470,260	464,161
COR	101,518	223,031	178,542	288,613	77,024	65,582

*Verdict on the Future*







# Key Points



- Tremendous Growth – both historically and in the future
- Growing Older – even though we are still a relatively young region and state
- Growing Diversity – vast majority of the region's growth since 2000 has come from non-Whites
- Well-Educated – future economy will benefit from a highly educated workforce

*Verdict on the Future*

